

| M65 TB



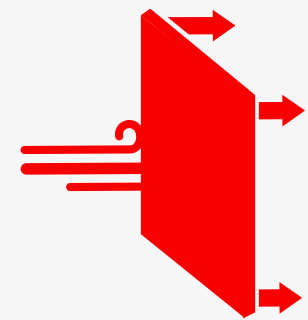
MOGS 2MM - M65 TB

The M65 TB series allows the manufacturing of large openings with a streamlined visual impact and maximum stability. M65 TB profiles have a section in view of only 18 mm and are made from solid 2 mm thick sheet metal, with thermal break. The depth of the profile, from 65 to 72 mm, is designed to achieve high moments of inertia and to accommodate the latest generation of insulating glass. The PA 6.6 polyamide insulating core guarantees excellent performance in terms of energy saving.

Available in galvanized steel, Cor-Ten steel, stainless steel and bright steel.



EN 12207



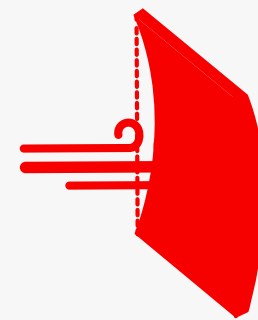
Air permeability
4 Class - 600 Pa

EN 12208



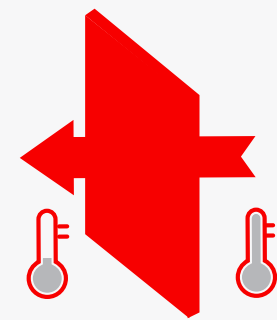
Water Tightness
7A Class - 300 Pa

EN 12210



Resistance to wind load
C4 Class- 1600 Pa

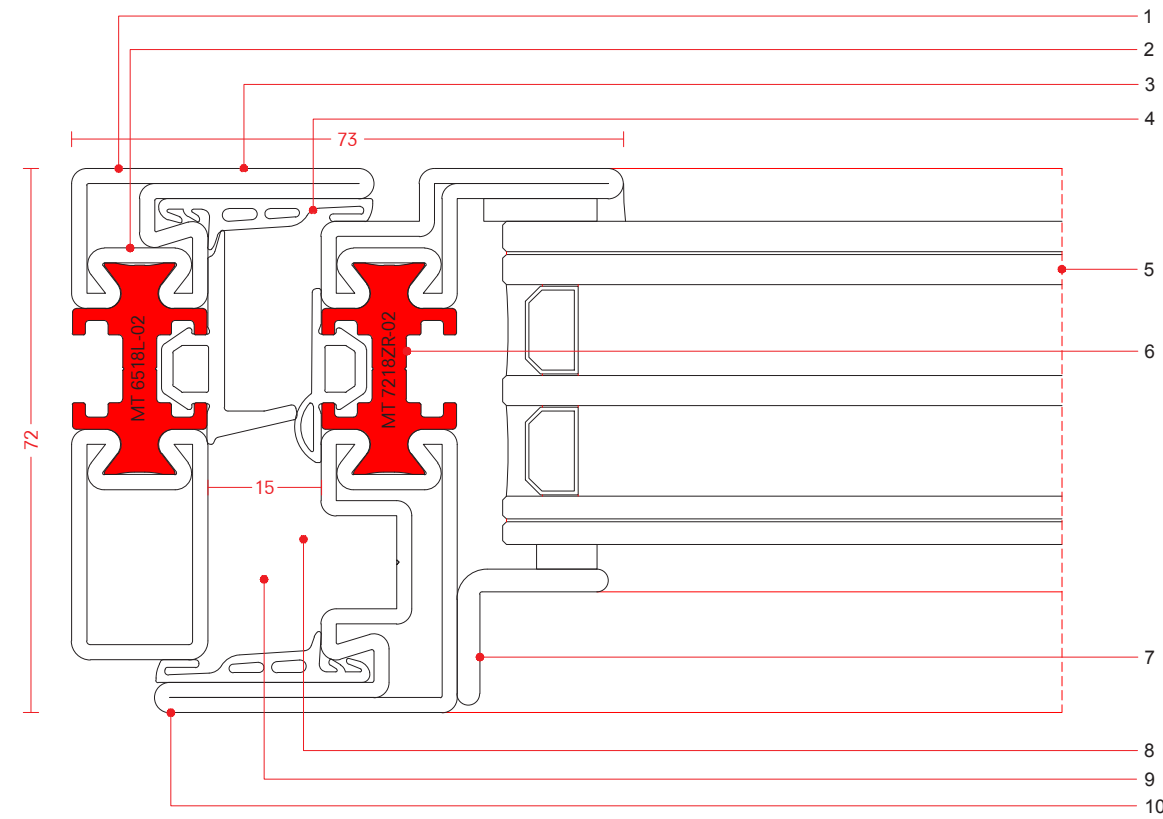
EN ISO 10077-1



Heat transfer coefficient*
 $U_w = 1.00 \text{ W/m}^2\text{K}$

*calculated on sample standardized window frame dim. 1230x1480 mm according to the EN 14351-1

M65 TB galvanized steel



drawing scale 1:1

FEATURES

1. 2 mm tubular profile in galvanized steel with high moments of inertia
2. continuously welded profile, high mechanical performance
3. external flush and internal overlapping sightlines
4. mechanically fixed rebate gaskets
5. profile depth compatible with high performance insulating glass up to 46 mm thick
6. thermal barrier in PA 6.6 polyamide
7. choice of different glazing beads
8. wide choice of specific fittings, including both visible and
9. any kind of openings: side-hung, top-hung and bottom-hung windows, tilt and turn, pivoting and folding doors.
10. surface finishes in any customized or RAL colours, for a great planning freedom





GLASS CUBE
OSTUNI, ITALY

OTTOSTUMM | **mogs**



HOTEL BRITANNIQUE
NAPLES

OTTOSTUMM | **mogs**





PRIVATE HOUSE
TREVISO, ITALY

OTTOSTUMM | mogs







VILLA LA GRINTOSA
SARDINIA, ITALY

OTTOSTUMM | **mogs**





FONDAZIONE VENEZIA
VENICE

OTTOSTUMM | mogs



DISTINCTIVE METALS

Cold formed steel

Cold-rolled steel profiles - whether bright or galvanized - have a uniform texture, which lends itself well to multiple finishes. Light brushing or blackening can be used as an alternative to traditional painting, and allow a high level of customization of the frame. In interior design, the surfaces can be left natural or simply galvanized, to create industrial-style openings. The corners of cold rolled steel doors and windows are always welded. Depending on the desired visual quality, the welds can be ground flat, left natural or even emphasized by brushing or blackened with special patinas. The Series FerroFinestra W50 TB and FerroFinestra W75 TB are cold rolled in high-precision production lines to ensure perfect windows and doors.

Cor-Ten steel

Cor-Ten is a material of great scenic effect and extraordinary elegance. In recent years, it has become a very popular material for windows and doors, both for restoration and for new buildings. Cor-Ten is a natural, living material that takes on different and unique shades over time and through exposure to the elements. The natural oxidation process can also be controlled chemically, with procedures that reduce natural "bleeding". In order to contain these phenomena, however, it is advisable to plan periodic treatments with applications of suitable waxes or oils. The corners of the frames are suitably welded, and the welding mark can be left natural or ground flat.

Stainless steel

The technical properties and remarkable resistance over time make stainless steel a very popular material used in construction and architecture since 1920. Its exceptional characteristics allow its use even in areas subject to strong environmental aggression, for roofs, curtain walls, doors and windows of very long duration, in almost total absence of maintenance. Appreciated above all for its metallic sheen, stainless steel allows extreme design freedom in terms of surface finishes, such as "black stainless steel", which can be obtained by applying special patinas on the brushed or sandblasted surface. Thanks to its natural and evocative texture, black stainless steel gives windows and doors an exclusive character. The corners of windows and doors made from cold rolled stainless steel profiles are mainly welded and welds are ground flat and polished. The steel chosen by Ottostumm | Mogs in the family products FerroFinestra W75 TB and Mogs 65 TB is considered as the best stainless steel alloy, AISI 316L stainless steel, containing the largest amount of molybdenum. AISI 316L is normally called "marine steel" because it is able to resist corrosion even in a highly salty environment.

OTTOSTUMM | **mogs**

OTTOSTUMM SA

Via Baragge, 2
6855 Stabio - Switzerland
T +41 (0)91 6417700 | info@ottostumm.com

ottostumm-mogs.com

OFFICIAL PARTNER OF OTTOSTUMM | **mogs**

METALFORM

MASTERS OF METAL

UNITED KINGDOM

METALFORM

NORWAYMETAL LTD

53 Chelsea Manor Street

London, SW3 5RZ

SALES@METALFORM.UK

+44 20 81298814

GERMANY

METALFORM GMBH

Carl-Zeiss-Ring 15A

85737 Ismaning

SALES@METALFORMGROUP.DE

+49 17663630406

NORWAY

METALFORM AS

Brochmannsveien 2

1950 Rømskog

SALG@METALFORM.NO

+47 401 62 446

METALFORMGROUP

SALES@METALFORMGROUP.COM