

ENVIRONMENTAL PRODUCT DECLARATION

in accordance with ISO 14025 and EN 15804:2012 + A2:2019

SlimLine® 38 Window

Small and large dimensions, double and triple glazed, openable and not openable



Owner of the declaration:

Publisher and Programme holder:

Declaration number:

Issue date:

Valid until

EUROPEAN ALUMINIUM

EPD-2023-0008



2023-07-17

2028-07-16

www.european-aluminium.eu

METALFORM

GENERAL INFORMATION

Owner of the declaration	Reynaers Aluminium Oude Liersebaan 266 B- 2570 Duffel, Belgium www.reynaers.com						
Manufacturer	Reynaers Aluminium Oude Liersebaan 266 B- 2570 Duffel, Belgium						
Publisher and Programme holder	EUROPEAN ALUMINIUM AISBL Avenue des Nerviens 85 1040 Brussels, Belgium  Paul Voss, Director General						
The declaration is based on the Product Category Rules	European Aluminium General Programme Instructions version 3, 23 rd of September 2020						
Declared Unit	1 m ² of SlimLine 38 Window						
Scope of the Environmental Product Declaration	<p>This EPD covers 1 m² of highly insulated system type SlimLine 38 Window - Small and large dimensions, double and triple glazed, openable and not openable. These EPD results have been calculated from an LCA tool for EPD, based on the GaBi database, initially realised by Thinkstep in 2013 and updated by Ecoinnovazione in 2019. Among the product family, two representative products have been selected and corresponding EPD results have been calculated based on specific bill of materials. These eight products refer to small and large dimensions, double and triple glazed, openable and not openable window system. The results generated by the collective tool can be considered as a good proxy to model highly insulated system produced by Reynaers Aluminium.</p> <p>The EPD may be used in a B2B context within the European Market.</p>						
Liability	The owner of the declaration is liable for the underlying manufacturing information and European Aluminium is not liable in this respect.						
Disclaimers	<p>This EPD cannot be used as a guarantee of the recycled content of the actual product sold on the market. A specific declaration may be asked from the supplier.</p> <p>The use of this EPD within BIM tools is in principle limited to the products explicitly included in the EPD. The scaling of results to model similar products can only be done if justified and transparently reported in the project report. Any responsibility regarding the misuse of this EPD by third parties is not accepted by the Programme Operator.</p>						
Verification	Verifier						
<table border="1"> <tr> <td colspan="2">EN15804:2012 +A2:2019 serves as core PCR completed by European Aluminium PCR 03/2020</td> </tr> <tr> <td colspan="2">Verification of the EPD by an independent third party in accordance with ISO 14025</td> </tr> <tr> <td><input type="checkbox"/> Internally</td> <td><input checked="" type="checkbox"/> Externally</td> </tr> </table>		EN15804:2012 +A2:2019 serves as core PCR completed by European Aluminium PCR 03/2020		Verification of the EPD by an independent third party in accordance with ISO 14025		<input type="checkbox"/> Internally	<input checked="" type="checkbox"/> Externally
EN15804:2012 +A2:2019 serves as core PCR completed by European Aluminium PCR 03/2020							
Verification of the EPD by an independent third party in accordance with ISO 14025							
<input type="checkbox"/> Internally	<input checked="" type="checkbox"/> Externally						
							

1 PRODUCT

1.1 Product description and applications

This Environmental Product Declaration (EPD) is for business-to-business communication. The product object of the EPD is SlimLine® 38 window, a highly insulated system of inward and outward opening windows, which combines elegance and comfort, with a unique design. This special slender steel look is the perfect solution for modern architecture and renovation of steel-framed windows, respecting the original design but offering a thermally improved solution.

The SL 38 system is available in 3 different minimalistic design variants, Classic, Ferro and Cubic, to perfectly match the architectural aspect of the building. The windows can be provided with double and triple glazing without losing the ultra-slim look.

In combination with its superior insulation capabilities, the system provides the perfect harmony between durable material, clean design and demanding architectural challenges.

Reynaers Aluminium is a leading European specialist in the development and marketing of innovative and sustainable aluminium solutions for windows, doors, curtain walls, sliding systems, sun screening and conservatories. Reynaers Aluminium is founded in 1965 and is part of the group Reynaers, currently employing over 2400 workers in more than 40 countries worldwide and exporting to more than 70 countries on 5 continents. Reynaers' mission is to improve the living- and work environment for people today and tomorrow. Reynaers combines design, technique and digitalisation to create innovative solutions that add value and inspire partners to create sustainable buildings.

The representative products are small and large, double and triple glazed, openable and not openable, highly insulated inward and outward opening windows with different heights and depths. EPD results have been calculated for 8 representative products that are detailed in Table 1.

Table 1 Details representative products

ID	Model	Size (W x H)	Glazing	Surface area (m ²)	Glass thickness (mm)
1	SlimLine 38 window - LDO	1.48 m x 2.18 m	Double	2.59	8 mm
2	SlimLine 38 window - LTO	1.48 m x 2.18 m	Triple	2.59	12 mm
3	SlimLine 38 window - SDO	1.23 m x 1.48 m	Double	1.5	8 mm
4	SlimLine 38 window - STO	1.23 m x 1.48 m	Triple	1.4	12 mm
5	SlimLine 38 window - LDN	1.48 m x 2.18 m	Double	3.02	8 mm
6	SlimLine 38 window - LTN	1.48 m x 2.18 m	Triple	3.02	12 mm
7	SlimLine 38 window - SDN	1.23 m x 1.48 m	Double	1.67	8 mm
8	SlimLine 38 window - STN	1.23 m x 1.48 m	Triple	1.67	12 mm

1.2 Technical Data

The most relevant technical data are reported in Table 2.

Table 2 Most relevant technical data

Category	Description & value	Standards
Thermal Insulation	Uf-value down to 1.7 W/m ² K depending on the frame/vent combination and the glass thickness.	EN ISO 10077-2
Acoustic performance	$R_w(C;C_{tr}) = 38 (-1; -4) \text{ dB} / 45 (-1; -5) \text{ dB}$, depending on glazing type	EN ISO 140-3; EN ISO 717-1
Air tightness	4 (600 Pa)	EN 1026; EN 12207
Water tightness	9A (600 Pa)	EN 1027; EN 12208
Wind load resistance	maximum test pressure 4 (1600 Pa) relative deformation C (< 1/300)	EN 12211; EN 12210

For the most up-to-date values of the technical data, please refer to the product specifications available on the Reynaers website (www.reynaers.com/consumers/our-products).

The most relevant standard for applications of aluminium highly insulated inward and outward opening windows in buildings is EN 14351.

1.3 Process description

The entire installation process is typically performed at the job site.

The following operations are carried out for the production of the main parts:

1. Aluminium profile (powder coated) preparation mainly via sawing and milling.
2. Frame production by assembling the various profiles via connectors and fixing via bolting or gluing. Connectors used are mostly composed of aluminium.
3. Positioning and fixing the various gaskets.
4. Infill application (e.g., glazing, opaque panels).
5. The hardware integration (if relevant).

The main background production processes are reported in Figure 1.

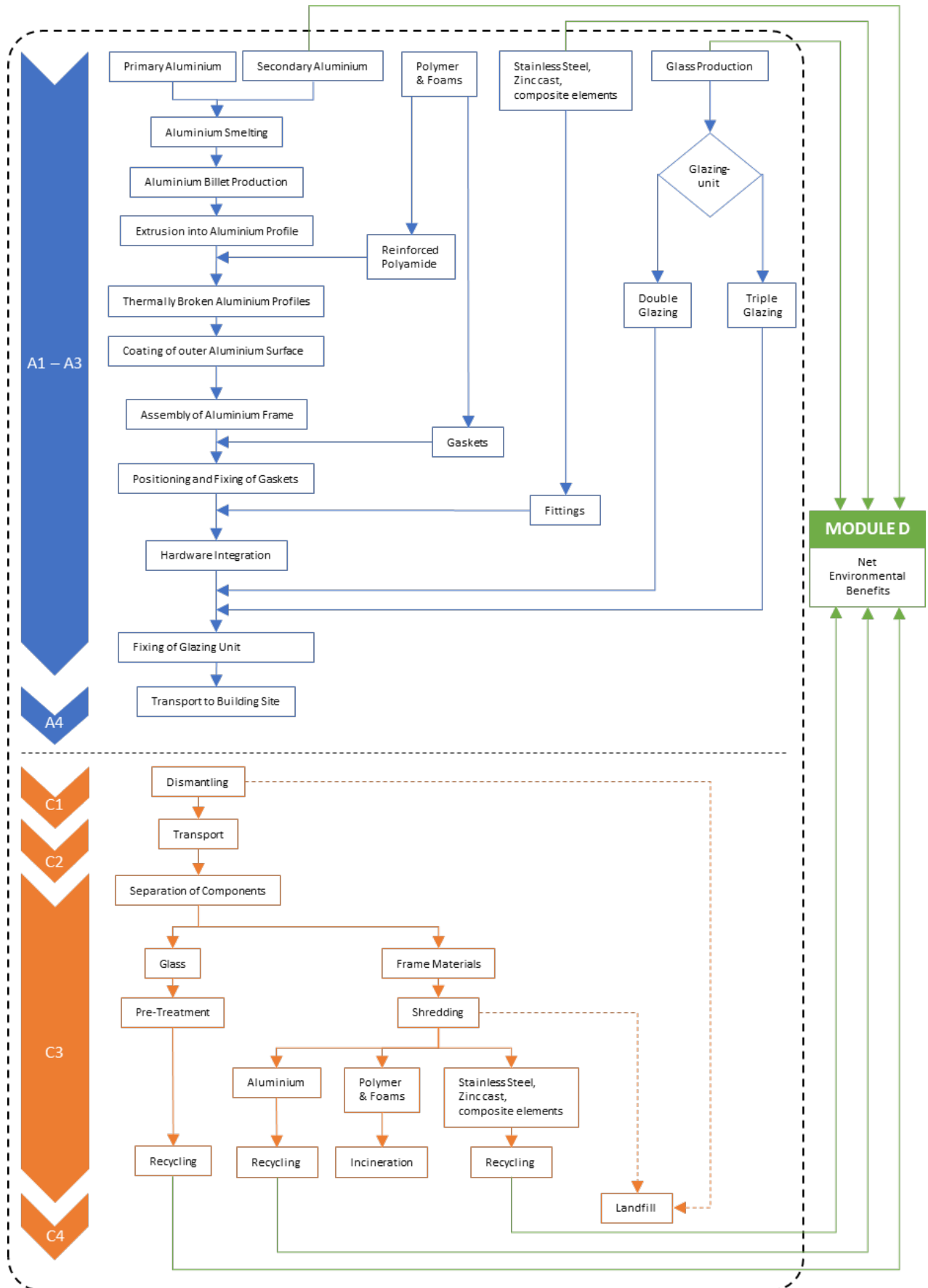


Figure 1 Main production processes and components of the sliding system

The upstream aluminium processes have been modelled using European Aluminium LCI datasets for the primary aluminium production, recycling and remelting as described in the European Aluminium Environmental profile report 2018.

For the other processes and materials, e.g., gaskets, glass unit or hardware, datasets from the GaBi database have been used. The powder coating of aluminium profiles has been modelled using GaBi datasets as well.

At end-of-life, thanks to their high price value (i.e., about 50% of the LME price) aluminium frames and profiles are systematically dismantled and collected for sending them to recycling. After being collected, the window systems are treated through shredding and sorting. However, the glazing unit might not be systematically collected at the building renovation or demolition site. Hence, two extreme end-of-life scenarios have been used for flat glass: 100% recycling or 100% landfilling. This allows to calculate country-specific end-of-life results if the collection rate is known, by interpolation of the results of these 2 extreme scenarios.

1.4 Health and safety aspects during production and installation

There are no critical health and safety aspects during the production of aluminium window systems. The pre-treatments used for the pre-treatment of aluminium profile do not contain chromium nor other substances of very high concern (SVHC substances), and this process is followed by a coating process realised using a powder without VOC.

There are no relevant aspects of occupational health and safety during the further processing and installation of Reynaers sliding systems. Under normal installation, no measurable Environmental impacts can be associated with the use of Reynaers aluminium window systems. The appropriate safety measures need to be taken at the building site, especially if installation takes place on a high-rise building.

1.5 Reference service life

Since the use phase is not modelled, no specific information is provided about the Reference Service Life. In normal use, aluminium building products are not altered or corroded over time. A regular cleaning (e.g. once a year) of the product suffices to secure a long service life. However, the use of highly alkaline (pH >10) or highly acidic (pH < 4) cleaning solutions should be avoided. In practice, a service life of 50 years can be assumed in normal use for such application, except for the IGU (Insulated Glass Unit) which needs to be replaced usually after 30 years due to slow degradation of its performance.

2 LCA – CALCULATION RULES

2.1 Declared unit & bill of materials

The Bill of Materials of the eight analysed products is reported in Table 3. The declared unit corresponds to 1 m² of highly insulated system of inward and outward opening doors.

Table 3 Bill of materials (kg) of the declared unit for 8 products

Reference				
Type	SlimLine 38 window - LDO		SlimLine 38 window - LTO	
	kg	%	kg	%
Glass	16.10	59.44%	24.10	69.02%
Aluminium	8.13	30.01%	7.94	22.74%
Metal parts	0.53	1.97%	0.54	1.55%
Thermal break	1.42	5.24%	1.43	4.10%
Gasket	0.86	3.17%	0.86	2.46%
Polymers	0.04	0.13%	0.04	0.10%
Foams	0.01	0.04%	0.01	0.03%
Total	27.09	100%	34.92	100%
Type	SlimLine 38 window - SDO		SlimLine 38 window - STO	
	kg	%	kg	%
Glass	16.50	56.23%	23.10	62.38%
Aluminium	9.06	30.88%	10.30	27.81%
Metal parts	0.80	2.74%	0.72	1.95%
Thermal break	1.73	5.90%	1.70	4.59%
Gasket	1.17	3.99%	1.13	3.05%
Polymers	0.07	0.23%	0.07	0.18%
Foams	0.01	0.05%	0.01	0.04%
Total	29.34	100%	37.03	100%
Type	SlimLine 38 window - LDN		SlimLine 38 window - LTN	
	kg	%	kg	%
Glass	18.70	80.22%	28.10	86.35%
Aluminium	3.62	15.53%	3.45	10.60%
Metal parts	0.00	0.00%	0.00	0.00%
Thermal break	0.78	3.34%	0.78	2.39%
Gasket	0.19	0.79%	0.19	0.57%
Polymers	0.03	0.12%	0.00	0.09%
Foams	0.00	0.00%	0.03	0.00%
Total	23.31	100%	32.54	100%
Type	SlimLine 38 window - SDN		SlimLine 38 window - STN	
	kg	%	kg	%
Glass	18.30	74.93%	27.50	82.31%
Aluminium	4.81	19.70%	4.60	13.77%
Metal parts	0.00	0.00%	0.00	0.00%
Thermal break	1.02	4.18%	1.02	3.05%

Gasket	0.24	0.98%	0.24	0.72%
Polymers	0.05	0.21%	0.05	0.15%
Foams	0.00	0.00%	0.00	0.00%
Total	24.42	100%	33.41	100%

2.2 System boundary

This EPD is from cradle to gate with modules C1-C4 and module D, as reported in Table 4.

The production stage (modules A1-A3) includes processes that provide materials and energy input for the system, manufacturing and transport processes up to the factory gate, as well as waste processing. For the end-of-life, the default scenario defined in the General Product Instructions and detailed in 3.2 is applied.

Table 4 Modules declared

Production			Installation		Use stage							End-of-Life				Next product system
Raw material	Transport	Manufacturing	Transport to	Installation	Use	Maintenance	Repair	Replacement	Refurbishment	Operational energy	Operational water	Deconstruction	Transport	Waste processing	Disposal	Reuse, recovery, recycling potential
A1	A2	A3	A4	A5	B1	B2	B3	B4	B5	B6	B7	C1	C2	C3	C4	D
X	X	X	X	ND	ND	ND	ND	ND	ND	ND	ND	X	X	X	X	X

Note: ND: Not Declared; X: Module included in the LCA.

Module A4 is declared for a distance of 1 km to give the possibility to adjust the resulting Environmental impacts depending on the specific distance at hand.

2.3 Energy mix

In the model developed the background electricity mix used is the European electricity mix (EU-28 Electricity grid mix (2017)). Details about the electricity modelling in the datasets: production of primary aluminium, extrusion, rolling and recycling please refer to the Environmental Profile Report 2018.

2.4 Allocation

The scrap which is produced along the production chain is recycled into the same production chain and is modelled as “closed-loop” within Module A. This recycling loop has been modelled in the GaBi model so that the window system is the only product exiting the gate. Hence, the production process does not deliver any co-products.

At the end-of-life stage, the window systems are sent to an end-of-life treatment which is modelled according to the scenario reported in 3.2. The environmental burdens and benefits of recycling and energy recovery are calculated in module D accordingly.

2.5 Assumptions and Cut-off criteria

The aluminium profiles were composed of a mix of 34% primary aluminium, low carbon primary aluminium 26% and 40% recycled aluminium. For the primary aluminium, a primary aluminium ingot

consumption mix was considered (European production + net fraction of imports into Europe), whereas for low carbon primary aluminium the data reported in the EPD of the manufacturer has been used, where possible, or primary aluminium production has been considered as a proxy. Alloying elements were not considered, and a pure aluminium profile has been assumed as a proxy.

2.6 Data quality

Representativeness

Technological: All primary and secondary data were modelled to be specific to the technologies or technology mixes under study. Where technology-specific data were unavailable, proxy data were used. For the aluminium production, extrusion profiles and recycling, the datasets described in the Environmental Profile Report 2018 of European Aluminium have been used and integrated with the EPD profile of the low carbon primary aluminium. The modelling reflects the specific BoM of the analysed products. Technological representativeness is considered to be very good.

Geographical: All primary data were collected specifically to the countries under study. Regarding secondary data, where EU region-specific data were unavailable, DE datasets were used. For the aluminium production, extrusion profiles and recycling, the datasets described in the Environmental Profile Report 2018 of European Aluminium have been used. Geographical representativeness is considered to be good.

Temporal: Primary data refer to the year 2020, and all secondary data come from the GaBi version 2021.2, including those on aluminium production, which are the most recent ones as described in the Environmental Profile Report 2018 of European Aluminium.

Completeness

All known operating data was taken into consideration in the analysis. Based on earlier studies conducted by European Aluminium, it can be assumed that the ignored processes or flows contribute to much less than 5% of the impact categories under review.

The process chain is considered sufficiently complete regarding the goal and scope of this study.

Overall, the data quality can be described as good.

2.7 Software and databases

These EPD results have been calculated from an LCA tool for EPD, based on the GaBi database. Currently, the EPD software is using the software GaBi version 2021.2.

2.8 Comparability

As a general rule, a comparison or evaluation of EPD data may be possible when all of the data to be compared has been drawn up in accordance with EN 15804 and the building context or product-specific characteristics are taken into consideration.

3 LCA – SCENARIOS AND ADDITIONAL INFORMATION

3.1 Scenario for additional modules

Module A4 is taken into consideration in this Declaration, and it has been modelled according to the information reported in Table 5.

Table 5 Module A4 – Transport to the building site

Scenario information	Unit (expressed per DU)
Fuel type and consumption of vehicle or vehicle type used for transport e.g. long-distance truck, boat, etc.	Truck-trailer, Euro 4, 34 - 40t gross weight / 27t payload capacity, diesel driven
Distance	1 km
Capacity utilisation (including empty returns)	61 %
Bulk density of transported products	-
Volume capacity utilisation factor (factor = 1 or <1 or ≥1 for compressed or nested packaged products)	Not applicable

3.2 Scenario for Mod. C1-C4

The default scenario for the end-of-life of the window system, as reported in the General Programme Instructions, is the following:

- collection rate: 99%;
- shredding efficiency: 95%;
- scrap recycled through refining process: 96,5%
- overall aluminium recycling rate: 91%

For the glass used in the window system, two extreme end-of-life scenarios were modelled: one with 100% recycling of the glass and one with 100% landfill of the glass.

Table 6 reports the main parameters of the end-of-life scenarios for the main materials and components.

Table 6 Parameters of the end-of-life scenarios for the main materials and components, related to the DU of SlimLine 38 window, LDO and LTO

Processes	Unit (expressed per FU or DU of components, products or materials and by type of material)	SlimLine 38 window - LDO		SlimLine 38 window - LTO		
		Scenario 100% glass landfill	Scenario 100% glass recycling	Scenario 100% glass landfill	Scenario 100% glass recycling	
Collection process specified by type	Kg collected separately	Glass: 16.1 kg		Glass: 24.1 kg		
		Aluminium frame: 8.05 kg		Aluminium frame: 7.86 kg		
		Gasket: 0.85 kg		Gasket: 0.85 kg		
		Metal fittings and others: 1.97 kg		Metal fittings and others: 2 kg		
	Kg collected with mixed construction waste	0		0		
Recovery system specified by type	Kg for re-use	0		0		
	Kg for recycling	0	Glass: 15.5 kg	0	Glass: 23.3 kg	
		Aluminium frame: 7.2 kg		Aluminium frame: 7.03 kg		
		Metal fittings: 0.50 kg		Metal fittings: 0.51 kg		
	Kg for energy recovery	Gasket: 0		Gasket: 0		
		Others: 0		Others: 0		
Disposal specified by type	Kg product or material for final deposition	Landfill	Aluminium frame: 0.46 kg		Aluminium frame: 0.45 kg	
		Landfill (inert materials)	Fittings and others: 0.17 kg		Fittings and others: 0.18 kg	
		Waste incineration	Gasket: 0.81 kg		Gasket: 0.81 kg	
		Waste incineration (plastics)	Fittings and others: 1.37 kg		Fittings and others: 1.39 kg	
		Landfill	Glass: 16.1 kg	0	Glass: 24.1 kg	0

Table 7 Parameters of the end-of-life scenarios for the main materials and components, related to the DU of SlimLine 38 window, SDO and STO

Processes	Unit (expressed per FU or DU of components, products or materials and by type of material)	SlimLine 38 window - SDO		SlimLine 38 window - STO		
		Scenario 100% glass landfill	Scenario 100% glass recycling	Scenario 100% glass landfill	Scenario 100% glass recycling	
Collection process specified by type	Kg collected separately	Glass: 16.5 kg		Glass: 23.1 kg		
		Aluminium frame: 8.97 kg		Aluminium frame: 10.2 kg		
		Gasket: 1.16 kg		Gasket: 1.12 kg		
		Metal fittings and others: 2.59 kg		Metal fittings and others: 2.48 kg		
	Kg collected with mixed construction waste	0		0		
Recovery system specified by type	Kg for re-use	0		0		
	Kg for recycling	0	Glass: 16 kg	0	Glass: 22.3 kg	
		Aluminium frame: 8.06 kg		Aluminium frame: 9.13 kg		
		Metal fittings: 0.76 kg		Metal fittings: 0.68 kg		
	Kg for energy recovery	Gasket: 0		Gasket: 0		
		Others: 0		Others: 0		
Disposal specified by type	Kg product or material for final deposition	Landfill	Aluminium frame: 0.51 kg		Aluminium frame: 0.58 kg	
		Landfill (inert materials)	Fittings and others: 0.23 kg		Fittings and others: 0.22 kg	
		Waste incineration	Gasket: 1.1 kg		Gasket: 1.06 kg	
		Waste incineration (plastics)	Fittings and others: 1.71 kg		Fittings and others: 1.68 kg	
		Landfill	Glass: 16.5 kg	0	Glass: 23.1 kg	0

Table 8 Parameters of the end-of-life scenarios for the main materials and components, related to the DU of SlimLine 38 window, LDN and LTN

Processes	Unit (expressed per FU or DU of components, products or materials and by type of material)	SlimLine 38 window - LDN		SlimLine 38 window - LTN		
		Scenario 100% glass landfill	Scenario 100% glass recycling	Scenario 100% glass landfill	Scenario 100% glass recycling	
Collection process specified by type	Kg collected separately	Glass: 18.7 kg		Glass: 28.1 kg		
		Aluminium frame: 3.59 kg		Aluminium frame: 3.42 kg		
		Gasket: 0.18 kg		Gasket: 0.18 kg		
		Metal fittings and others: 0.80 kg		Metal fittings and others: 0.80 kg		
	Kg collected with mixed construction waste	0		0		
Recovery system specified by type	Kg for re-use	0		0		
	Kg for recycling	0	Glass: 18.1 kg	0	Glass: 27.2 kg	
		Aluminium frame: 3.21 kg		Aluminium frame: 3.06 kg		
		Metal fittings: 0 kg		Metal fittings: 0		
	Kg for energy recovery	Gasket: 0		Gasket: 0		
Others: 0		Others: 0				
Disposal specified by type	Kg product or material for final deposition	Landfill	Aluminium frame: 0.20 kg		Aluminium frame: 0.19 kg	
		Landfill (inert materials)	Fittings and others: 0.06 kg		Fittings and others: 0.06 kg	
		Waste incineration	Gasket: 0.17 kg		Gasket: 0.17 kg	
		Waste incineration (plastics)	Fittings and others: 0.76 kg		Fittings and others: 0.76 kg	
		Landfill	Glass: 18.7 kg	0	Glass: 28.1 kg	0

Table 9 Parameters of the end-of-life scenarios for the main materials and components, related to the DU of SlimLine 38 window, SDN and STN

Processes	Unit (expressed per FU or DU of components, products or materials and by type of material)	SlimLine 38 window - SDN		SlimLine 38 window - STN		
		Scenario 100% glass landfill	Scenario 100% glass recycling	Scenario 100% glass landfill	Scenario 100% glass recycling	
Collection process specified by type	Kg collected separately	Glass: 18.3 kg		Glass: 27.5 kg		
		Aluminium frame: 4.77 kg		Aluminium frame: 4.55 kg		
		Gasket: 0.24 kg		Gasket: 0.24 kg		
		Metal fittings and others: 1.06 kg		Metal fittings and others: 1.17 kg		
	Kg collected with mixed construction waste	0		0		
Recovery system specified by type	Kg for re-use	0		0		
	Kg for recycling	0	Glass: 17.8 kg	0	Glass: 26.6 kg	
		Aluminium frame: 4.27 kg		Aluminium frame: 4.08 kg		
		Metal fittings: 0 kg		Metal fittings: 0 kg		
	Kg for energy recovery	Gasket: 0		Gasket: 0		
Others: 0		Others: 0				
Disposal specified by type	Kg product or material for final deposition	Landfill	Aluminium frame: 0.27 kg		Aluminium frame: 0.26 kg	
		Landfill (inert materials)	Fittings and others: 0.08 kg		Fittings and others: 0.08 kg	
		Waste incineration	Gasket: 0.23 kg		Gasket: 0.23 kg	
		Waste incineration (plastics)	Fittings and others: 1.01 kg		Fittings and others: 1.01 kg	
		Landfill	Glass: 18.3 kg	0	Glass: 27.5 kg	0

Note to Table 6, Table 7, Table 8 and Table 9:

Material collected separately: This amount refers to the waste stream collected separately per material before being subjected to shredding

Material for recycling: This amount refers to the waste stream sent to recycling per material after the shredding and/or sorting process.

Material for final deposition – aluminium: this amount includes the aluminium not collected separately and the shredding losses.

3.3 Scenario Mod. D

Module D includes:

- a transport from the scrap dealers to the recycling plants, considering an average distance of 200 km;
- recycling of Aluminium through refining;
- a net credit for the avoided production of primary aluminium;
- a net credit for the avoided production of flat glass (for 100% glass recycling scenario)

The calculation of module D has been implemented in line with the General Programme Instructions of European Aluminium, thus based on the difference between the scrap used at the input and output side. In some cases, this may result in environmental burdens instead of environmental benefits if the product system is a net consumer of valuable secondary material.

3.4 Additional environmental information

During use, the air quality, i.e. VOC emission, is not affected by the system of inward and outward opening windows. In case of fire, aluminium is a non-combustible construction material (European Fire Class A1) in accordance with Commission Decision 96/603/EC and does therefore not make any contribution to fire.

4 LCA RESULTS – SlimLine 38 window - LDO

4.1 Result of the LCA – Environmental impacts

The tables below report the results of the LCA study for the two glass scenarios: 100% recycling and 100% landfill.

4.1.1 Core Environmental impacts indicators

Scenario 100% glass recycling

Table 10 Core Environmental impacts indicators for 1 m² SlimLine 38 window – LDO, scenario 100% glass recycling

Impact category	Unit	A1-A3	A4	C1	C2	C3	C4	D
GWP - total	kg CO ₂ eq.	9.19E+01	1.32E-03	9.69E-02	2.76E-01	9.46E-01	4.43E+00	-3.03E+01
GWP – fossil	kg CO ₂ eq.	9.17E+01	1.31E-03	9.68E-02	2.74E-01	7.75E-01	4.42E+00	-3.02E+01
GWP – biogenic	kg CO ₂ eq.	1.81E-01	6.59E-07	-5.40E-05	1.38E-04	1.66E-01	1.43E-04	-6.97E-02
GWP - luluc	kg CO ₂ eq.	5.65E-02	8.51E-06	2.19E-04	1.78E-03	4.15E-03	1.29E-04	-8.99E-03
ODP	kg CFC 11 eq.	3.64E-10	3.39E-19	1.91E-15	7.08E-17	8.23E-15	8.65E-16	-1.34E-10
AP	mol H ⁺ eq.	4.00E-01	7.40E-06	2.46E-04	1.55E-03	1.12E-03	4.22E-03	-1.63E-01
EP - freshwater	kg PO ₄ ³⁻ eq.	3.60E-04	2.72E-09	2.48E-07	5.69E-07	2.36E-06	2.09E-06	-2.08E-05
EP - marine	kg N eq.	1.03E-01	3.65E-06	7.76E-05	7.62E-04	6.81E-04	2.08E-03	-2.64E-02
EP - terrestrial	mol N eq.	1.13E+00	4.03E-05	8.37E-04	8.43E-03	7.72E-03	2.34E-02	-3.31E-01
POCP	kg NMVOC eq.	2.79E-01	6.98E-06	2.14E-04	1.46E-03	1.20E-03	5.33E-03	-7.37E-02
ADP-MM (**)	kg Sb eq.	1.08E-03	1.15E-10	2.48E-08	2.41E-08	1.11E-07	1.64E-08	-8.53E-04
ADPF (**)	MJ	1.39E+03	1.76E-02	1.64E+00	3.67E+00	2.84E+00	2.02E+00	-3.68E+02
WDP (**)	m ³	2.12E+01	5.15E-06	1.28E-02	1.08E-03	7.19E-02	4.61E-01	-4.11E+00

Note: GWP – Global Warming Potential; ODP – Ozone Depletion; AP – acidification potential for soil and water; EP – Eutrophication potential; POCP – formation potential of tropospheric ozone; ADP - MM – abiotic depletion potential for non fossil resources; ADPF – Abiotic depletion potential for fossil resources; WDP – Water deprivation potential.

(**) **Disclaimer:** the results of this Environmental impacts indicator shall be used with care as the uncertainties on these results are high or as there is limited experience with the indicator.

Scenario 100% glass landfill

Table 11 Core Environmental impacts indicators for 1 m² SlimLine 38 window – LDO, scenario 100% glass landfill

Impact category	Unit	A1-A3	A4	C1	C2	C3	C4	D
GWP - total	kg CO ₂ eq.	9.19E+01	1.32E-03	9.69E-02	1.58E-01	3.34E-01	4.66E+00	-2.03E+01
GWP – fossil	kg CO ₂ eq.	9.17E+01	1.31E-03	9.68E-02	1.57E-01	3.31E-01	4.67E+00	-2.03E+01
GWP – biogenic	kg CO ₂ eq.	1.81E-01	6.59E-07	-5.40E-05	7.90E-05	2.06E-03	-6.91E-03	-5.87E-02
GWP - luluc	kg CO ₂ eq.	5.65E-02	8.51E-06	2.19E-04	1.02E-03	8.07E-04	8.43E-04	-4.42E-03
ODP	kg CFC 11 eq.	3.64E-10	3.39E-19	1.91E-15	4.07E-17	1.04E-14	1.81E-15	-1.34E-10
AP	mol H ⁺ eq.	4.00E-01	7.40E-06	2.46E-04	8.88E-04	5.68E-04	5.95E-03	-1.08E-01
EP - freshwater	kg PO ₄ ³⁻ eq.	3.60E-04	2.72E-09	2.48E-07	3.27E-07	1.40E-06	2.50E-06	-1.32E-05
EP - marine	kg N eq.	1.03E-01	3.65E-06	7.76E-05	4.37E-04	1.59E-04	2.53E-03	-1.52E-02
EP - terrestrial	mol N eq.	1.13E+00	4.03E-05	8.37E-04	4.84E-03	1.66E-03	2.83E-02	-1.65E-01
POCP	kg NMVOC eq.	2.79E-01	6.98E-06	2.14E-04	8.37E-04	4.01E-04	6.69E-03	-4.60E-02
ADP-MM (**)	kg Sb eq.	1.08E-03	1.15E-10	2.48E-08	1.38E-08	1.26E-07	3.93E-08	-8.53E-04
ADPF (**)	MJ	1.39E+03	1.76E-02	1.64E+00	2.11E+00	4.19E+00	5.24E+00	-2.59E+02
WDP (**)	m ³	2.12E+01	5.15E-06	1.28E-02	6.18E-04	7.43E-03	4.87E-01	-3.17E+00

Note: GWP – Global Warming Potential; ODP – Ozone Depletion; AP – acidification potential for soil and water; EP – Eutrophication potential; POCP – formation potential of tropospheric ozone; ADP - MM – abiotic depletion potential for non fossil resources; ADPF – Abiotic depletion potential for fossil resources; WDP – Water deprivation potential.

(**) **Disclaimer:** the results of this Environmental impacts indicator shall be used with care as the uncertainties on these results are high or as there is limited experience with the indicator.

4.1.2 Additional Environmental impacts indicators

Scenario 100% glass recycling

Table 12 Additional Environmental impacts indicators for 1 m² SlimLine 38 window – LDO, scenario 100% glass recycling

Impact category	Unit	A1-A3	A4	C1	C2	C3	C4	D
Particular Matter emissions	Disease incidence	4.29E-06	2.54E-11	2.32E-09	5.30E-09	1.12E-09	1.50E-08	-2.12E-06
Ionising radiation - human health (*)	[kBq U235 eq.]	1.01E+01	1.60E-06	3.46E-02	3.35E-04	-3.43E-02	8.66E-03	-3.27E+00
Eco-toxicity (freshwater) (**)	[CTUe]	1.86E+03	1.46E-02	7.78E-01	3.05E+00	4.57E+00	8.74E-01	-9.55E+02
Human toxicity - cancer effects (**)	[CTUh]	4.84E-07	2.88E-13	2.05E-11	6.03E-11	5.84E-11	5.55E-11	-4.45E-09
Human toxicity - non-cancer effects (**)	[CTUh]	2.84E-06	1.51E-11	8.42E-10	3.16E-09	4.17E-09	3.64E-09	-4.44E-08
Land Use related impacts/ Soil quality (**)	dimensionless	2.17E+02	5.50E-03	5.15E-01	1.15E+00	3.46E+00	3.47E-01	-2.15E+01

(*) **Disclaimer:** This impact category deals mainly with the eventual impact of low dose ionizing radiation on human health of the nuclear fuel cycle. It does not consider effects due to possible nuclear accidents, occupational exposure nor due to radioactive waste disposal in underground facilities. Potential ionizing radiation from the soil, from radon and from some construction materials is also not measured by this indicator.

(**) **Disclaimer:** the results of this Environmental impacts indicator shall be used with care as the uncertainties on these results are high or as there is limited experience with the indicator.

Scenario 100% glass landfill

Table 13 Additional Environmental impacts indicators for 1 m² SlimLine 38 window – LDO, scenario 100% glass landfill

Impact category	Unit	A1-A3	A4	C1	C2	C3	C4	D
Particular Matter emissions	Disease incidence	4.29E-06	2.54E-11	2.32E-09	3.04E-09	4.19E-09	3.65E-08	-1.50E-06
Ionising radiation - human health (*)	[kBq U235 eq.]	1.01E+01	1.60E-06	3.46E-02	1.92E-04	3.88E-02	1.22E-02	-3.00E+00
Eco-toxicity (freshwater) (**)	[CTUe]	1.86E+03	1.46E-02	7.78E-01	1.75E+00	1.67E+00	2.71E+00	-8.51E+01
Human toxicity - cancer effects (**)	[CTUh]	4.84E-07	2.88E-13	2.05E-11	3.46E-11	2.31E-10	3.26E-10	-2.84E-09
Human toxicity - non-cancer effects (**)	[CTUh]	2.84E-06	1.51E-11	8.42E-10	1.81E-09	1.90E-09	3.35E-08	1.41E-07
Land Use related impacts/ Soil quality (**)	dimensionless	2.17E+02	5.50E-03	5.15E-01	6.60E-01	2.07E+00	9.98E-01	-1.50E+01

(*) **Disclaimer:** This impact category deals mainly with the eventual impact of low dose ionizing radiation on human health of the nuclear fuel cycle. It does not consider effects due to possible nuclear accidents, occupational exposure nor due to radioactive waste disposal in underground facilities. Potential ionizing radiation from the soil, from radon and from some construction materials is also not measured by this indicator.

(**) **Disclaimer:** the results of this Environmental impacts indicator shall be used with care as the uncertainties on these results are high or as there is limited experience with the indicator.

4.2 Result of the LCA – Resource use

The tables below report the results of the resource use for the two glass scenarios: 100% recycling and 100% landfill.

Scenario 100% glass recycling

Table 14 Resource use for 1 m² SlimLine 38 window – LDO, scenario 100% glass recycling

Parameter	Unit	A1-A3	A4	C1	C2	C3	C4	D
PERE	MJ	3.53E+02	1.02E-03	6.65E-01	2.13E-01	1.24E+00	2.68E-01	-1.18E+02
PERM	MJ	0.00E+00	0.00E+00	0.00E+00	0.00E+00	0.00E+00	0.00E+00	0.00E+00
PERT	MJ	3.53E+02	1.02E-03	6.65E-01	2.13E-01	1.24E+00	2.68E-01	-1.18E+02
PENRE	MJ	1.18E+03	1.76E-02	1.64E+00	3.67E+00	2.84E+00	2.02E+00	-3.69E+02
PENRM	MJ	8.22E+01	0.00E+00	0.00E+00	0.00E+00	0.00E+00	0.00E+00	0.00E+00
PENRT	MJ	1.26E+03	1.76E-02	1.64E+00	3.67E+00	2.84E+00	2.02E+00	-3.69E+02
SM	kg	3.62E+00	0.00E+00	0.00E+00	0.00E+00	0.00E+00	0.00E+00	0.00E+00
RSF	MJ	0.00E+00	0.00E+00	0.00E+00	0.00E+00	0.00E+00	0.00E+00	0.00E+00
NRSF	MJ	0.00E+00	0.00E+00	0.00E+00	0.00E+00	0.00E+00	0.00E+00	0.00E+00
FW	m ³	5.74E-01	9.06E-07	6.46E-04	1.89E-04	1.35E-03	1.09E-02	-2.94E-01

Note: PERE – use of renewable primary energy resources used as raw materials; PERT – Total use of renewable primary energy resources; PENRE – use of non-renewable primary energy excluding non-renewable primary energy resources used as raw materials; PENRM – use of non-renewable primary energy resources used as raw materials; PENRT – Total use of non-renewable primary energy resources; SM – Use of secondary materials; RSF – Use of renewable secondary fuels; NRSF – use of non-renewable secondary fuels; FW – use of net fresh water.

Scenario 100% glass landfill

Table 15 Resource use for 1 m² SlimLine 38 window – LDO, scenario 100% glass landfill

Parameter	Unit	A1-A3	A4	C1	C2	C3	C4	D
PERE	MJ	3.53E+02	1.02E-03	6.65E-01	1.22E-01	2.26E+00	7.02E-01	-1.12E+02
PERM	MJ	0.00E+00	0.00E+00	0.00E+00	0.00E+00	0.00E+00	0.00E+00	0.00E+00
PERT	MJ	3.53E+02	1.02E-03	6.65E-01	1.22E-01	2.26E+00	7.02E-01	-1.12E+02
PENRE	MJ	1.18E+03	1.76E-02	1.64E+00	2.11E+00	4.19E+00	5.24E+00	-2.59E+02
PENRM	MJ	8.22E+01	0.00E+00	0.00E+00	0.00E+00	0.00E+00	0.00E+00	0.00E+00
PENRT	MJ	1.26E+03	1.76E-02	1.64E+00	2.11E+00	4.19E+00	5.24E+00	-2.59E+02
SM	kg	3.62E+00	0.00E+00	0.00E+00	0.00E+00	0.00E+00	0.00E+00	0.00E+00
RSF	MJ	0.00E+00	0.00E+00	0.00E+00	0.00E+00	0.00E+00	0.00E+00	0.00E+00
NRSF	MJ	0.00E+00	0.00E+00	0.00E+00	0.00E+00	0.00E+00	0.00E+00	0.00E+00
FW	m ³	5.74E-01	9.06E-07	6.46E-04	1.09E-04	1.22E-03	1.17E-02	-2.68E-01

Note: PERE – use of renewable primary energy excluding renewable primary energy resources used as raw materials; PERM – use of renewable primary energy resources used as raw materials; PERT – Total use of renewable primary energy resources; PENRE – use of non-renewable primary energy excluding non-renewable primary energy resources used as raw materials; PENRM – use of non-renewable primary energy resources used as raw materials; PENRT – Total use of non-renewable primary energy resources; SM – Use of secondary materials; RSF – Use of renewable secondary fuels; NRSF – use of non-renewable secondary fuels; FW – use of net fresh water.

4.3 Result of the LCA – Output flows, waste categories

Scenario 100% glass recycling

Table 16 Output flows, waste categories for 1 m² SlimLine 38 window – LDO, scenario 100% glass recycling

Parameter	Unit	A1-A3	A4	C1	C2	C3	C4	D
HWD	kg	8.38E-07	7.34E-13	3.83E-10	1.53E-10	2.48E-09	4.33E-10	-1.36E-07
NHWD	kg	1.04E+01	2.83E-06	1.04E-03	5.92E-04	1.51E-02	9.01E-01	-5.49E+00
RWD	kg	3.79E-02	1.69E-08	2.11E-04	3.52E-06	4.78E-06	5.89E-05	-1.83E-02
CRU	kg	0.00E+00	0.00E+00	0.00E+00	0.00E+00	0.00E+00	0.00E+00	0.00E+00
MFR	kg	0.00E+00	0.00E+00	0.00E+00	0.00E+00	2.32E+01	0.00E+00	0.00E+00
MER	kg	0.00E+00	0.00E+00	0.00E+00	0.00E+00	0.00E+00	0.00E+00	0.00E+00
EEE	MJ	0.00E+00	0.00E+00	0.00E+00	0.00E+00	0.00E+00	7.69E+00	0.00E+00
EET	MJ	0.00E+00	0.00E+00	0.00E+00	0.00E+00	0.00E+00	1.39E+01	0.00E+00

Note: HWD – hazardous waste disposed; NHWD – Non-hazardous waste disposed; RWD – Radioactive waste disposed; CRU – Components for re-use; MFR – Materials for recycling; MER – Materials for energy recovery; EEE – Exported electrical energy; EET – Exported thermal energy

Scenario 100% glass landfill

Table 17 Output flows, waste categories for 1 m² SlimLine 38 window – LDO, scenario 100% glass landfill

Parameter	Unit	A1-A3	A4	C1	C2	C3	C4	D
HWD	kg	8.38E-07	7.34E-13	3.83E-10	8.80E-11	3.25E-09	7.75E-10	-1.35E-07
NHWD	kg	1.04E+01	2.83E-06	1.04E-03	3.40E-04	4.33E-03	1.70E+01	-5.11E+00
RWD	kg	3.79E-02	1.69E-08	2.11E-04	2.02E-06	3.94E-04	9.27E-05	-1.66E-02
CRU	kg	0.00E+00	0.00E+00	0.00E+00	0.00E+00	0.00E+00	0.00E+00	0.00E+00
MFR	kg	0.00E+00	0.00E+00	0.00E+00	0.00E+00	7.70E+00	0.00E+00	0.00E+00
MER	kg	0.00E+00	0.00E+00	0.00E+00	0.00E+00	0.00E+00	0.00E+00	0.00E+00
EEE	MJ	0.00E+00	0.00E+00	0.00E+00	0.00E+00	0.00E+00	7.69E+00	0.00E+00
EET	MJ	0.00E+00	0.00E+00	0.00E+00	0.00E+00	0.00E+00	1.39E+01	0.00E+00

Note: HWD – hazardous waste disposed; NHWD – Non-hazardous waste disposed; RWD – Radioactive waste disposed; CRU – Components for re-use; MFR – Materials for recycling; MER – Materials for energy recovery; EEE – Exported electrical energy; EET – Exported thermal energy

5 LCA RESULTS – SlimLine 38 window – LTO

5.1 Result of the LCA – Environmental impacts

The tables below report the results of the LCA study for the two glass scenarios: 100% recycling and 100% landfill.

5.1.1 Core Environmental impacts indicators

Scenario 100% glass recycling

Table 18 Core Environmental impacts indicators for 1 m² SlimLine 38 window – LTO, scenario 100% glass recycling

Impact category	Unit	A1-A3	A4	C1	C2	C3	C4	D
GWP - total	kg CO ₂ eq.	1.08E+02	1.70E-03	1.02E-01	3.53E-01	1.25E+00	4.45E+00	-3.49E+01
GWP – fossil	kg CO ₂ eq.	1.07E+02	1.69E-03	1.02E-01	3.50E-01	9.92E-01	4.45E+00	-3.48E+01
GWP – biogenic	kg CO ₂ eq.	2.78E-01	8.50E-07	-2.66E-04	1.76E-04	2.48E-01	1.51E-04	-7.51E-02
GWP - luluc	kg CO ₂ eq.	7.18E-02	1.10E-05	2.51E-04	2.27E-03	5.80E-03	1.30E-04	-1.13E-02
ODP	kg CFC 11 eq.	3.58E-10	4.38E-19	1.91E-15	9.06E-17	6.99E-15	8.71E-16	-1.31E-10
AP	mol H ⁺ eq.	4.46E-01	9.55E-06	2.70E-04	1.98E-03	1.39E-03	4.26E-03	-1.88E-01
EP - freshwater	kg PO ₄ ³⁻ eq.	3.75E-04	3.52E-09	2.57E-07	7.28E-07	2.82E-06	2.11E-06	-2.46E-05
EP - marine	kg N eq.	1.33E-01	4.71E-06	8.88E-05	9.74E-04	9.40E-04	2.10E-03	-3.18E-02
EP - terrestrial	mol N eq.	1.50E+00	5.21E-05	9.60E-04	1.08E-02	1.07E-02	2.37E-02	-4.12E-01
POCP	kg NMVOC eq.	3.68E-01	9.01E-06	2.45E-04	1.86E-03	1.59E-03	5.39E-03	-8.68E-02
ADP-MM (**)	kg Sb eq.	1.16E-03	1.49E-10	2.53E-08	3.08E-08	1.01E-07	1.66E-08	-9.16E-04
ADPF (**)	MJ	1.58E+03	2.27E-02	1.70E+00	4.69E+00	2.11E+00	2.04E+00	-4.19E+02
WDP (**)	m ³	1.94E+01	6.65E-06	1.28E-02	1.38E-03	1.04E-01	4.64E-01	-4.56E+00

Note: GWP – Global Warming Potential; ODP – Ozone Depletion; AP – acidification potential for soil and water; EP – Eutrophication potential; POCP – formation potential of tropospheric ozone; ADP - MM – abiotic depletion potential for non fossil resources; ADPF – Abiotic depletion potential for fossil resources; WDP – Water deprivation potential.

(**) **Disclaimer:** the results of this Environmental impacts indicator shall be used with care as the uncertainties on these results are high or as there is limited experience with the indicator.

Scenario 100% glass landfill

Table 19 Core Environmental impacts indicators for 1 m² SlimLine 38 window – LTO, scenario 100% glass landfill

Impact category	Unit	A1-A3	A4	C1	C2	C3	C4	D
GWP - total	kg CO ₂ eq.	1.08E+02	1.70E-03	1.02E-01	1.76E-01	3.29E-01	4.81E+00	-2.00E+01
GWP – fossil	kg CO ₂ eq.	1.07E+02	1.69E-03	1.02E-01	1.75E-01	3.26E-01	4.81E+00	-2.00E+01
GWP – biogenic	kg CO ₂ eq.	2.78E-01	8.50E-07	-2.66E-04	8.80E-05	2.02E-03	-1.04E-02	-5.86E-02
GWP - luluc	kg CO ₂ eq.	7.18E-02	1.10E-05	2.51E-04	1.14E-03	7.95E-04	1.20E-03	-4.47E-03
ODP	kg CFC 11 eq.	3.58E-10	4.38E-19	1.91E-15	4.53E-17	1.02E-14	2.29E-15	-1.31E-10
AP	mol H ⁺ eq.	4.46E-01	9.55E-06	2.70E-04	9.90E-04	5.59E-04	6.86E-03	-1.07E-01
EP - freshwater	kg PO ₄ ³⁻ eq.	3.75E-04	3.52E-09	2.57E-07	3.64E-07	1.38E-06	2.72E-06	-1.32E-05
EP - marine	kg N eq.	1.33E-01	4.71E-06	8.88E-05	4.87E-04	1.57E-04	2.78E-03	-1.49E-02
EP - terrestrial	mol N eq.	1.50E+00	5.21E-05	9.60E-04	5.39E-03	1.64E-03	3.11E-02	-1.63E-01
POCP	kg NMVOC eq.	3.68E-01	9.01E-06	2.45E-04	9.33E-04	3.95E-04	7.43E-03	-4.53E-02
ADP-MM (**)	kg Sb eq.	1.16E-03	1.49E-10	2.53E-08	1.54E-08	1.24E-07	5.09E-08	-9.15E-04
ADPF (**)	MJ	1.58E+03	2.27E-02	1.70E+00	2.35E+00	4.12E+00	6.87E+00	-2.56E+02
WDP (**)	m ³	1.94E+01	6.65E-06	1.28E-02	6.89E-04	7.32E-03	5.03E-01	-3.14E+00

Note: GWP – Global Warming Potential; ODP – Ozone Depletion; AP – acidification potential for soil and water; EP – Eutrophication potential; POCP – formation potential of tropospheric ozone; ADP - MM – abiotic depletion potential for non fossil resources; ADPF – Abiotic depletion potential for fossil resources; WDP – Water deprivation potential.

(**) **Disclaimer:** the results of this Environmental impacts indicator shall be used with care as the uncertainties on these results are high or as there is limited experience with the indicator.

5.1.2 Additional Environmental impacts indicators

Scenario 100% glass recycling

Table 20 Additional Environmental impacts indicators for 1 m² SlimLine 38 window – LTO, scenario 100% glass recycling

Impact category	Unit	A1-A3	A4	C1	C2	C3	C4	D
Particular Matter emissions	Disease incidence	4.64E-06	3.27E-11	2.59E-09	6.78E-09	-4.76E-10	1.51E-08	-2.40E-06
Ionising radiation - human health (*)	[kBq U235 eq.]	9.84E+00	2.07E-06	3.46E-02	4.29E-04	-7.14E-02	8.72E-03	-3.36E+00
Eco-toxicity (freshwater) (**)	[CTUe]	2.58E+03	1.88E-02	8.31E-01	3.90E+00	6.00E+00	8.79E-01	-1.39E+03
Human toxicity - cancer effects (**)	[CTUh]	4.69E-07	3.72E-13	2.15E-11	7.71E-11	-3.13E-11	5.57E-11	-5.07E-09
Human toxicity - non-cancer effects (**)	[CTUh]	3.09E-06	1.95E-11	9.02E-10	4.04E-09	5.28E-09	3.64E-09	-1.23E-07
Land Use related impacts/ Soil quality (**)	dimensionless	2.36E+02	7.10E-03	5.35E-01	1.47E+00	4.13E+00	3.49E-01	-2.50E+01

(*) **Disclaimer:** This impact category deals mainly with the eventual impact of low dose ionizing radiation on human health of the nuclear fuel cycle. It does not consider effects due to possible nuclear accidents, occupational exposure nor due to radioactive waste disposal in underground facilities. Potential ionizing radiation from the soil, from radon and from some construction materials is also not measured by this indicator.

(**) **Disclaimer:** the results of this Environmental impacts indicator shall be used with care as the uncertainties on these results are high or as there is limited experience with the indicator.

Scenario 100% glass landfill

Table 21 Additional Environmental impacts indicators for 1 m² SlimLine 38 window – LTO, scenario 100% glass landfill

Impact category	Unit	A1-A3	A4	C1	C2	C3	C4	D
Particular Matter emissions	Disease incidence	4.64E-06	3.27E-11	2.59E-09	3.39E-09	4.13E-09	4.74E-08	-1.47E-06
Ionising radiation - human health (*)	[kBq U235 eq.]	9.84E+00	2.07E-06	3.46E-02	2.14E-04	3.83E-02	1.40E-02	-2.96E+00
Eco-toxicity (freshwater) (**)	[CTUe]	2.58E+03	1.88E-02	8.31E-01	1.95E+00	1.65E+00	3.63E+00	-8.42E+01
Human toxicity - cancer effects (**)	[CTUh]	4.69E-07	3.72E-13	2.15E-11	3.86E-11	2.28E-10	4.62E-10	-2.65E-09
Human toxicity - non-cancer effects (**)	[CTUh]	3.09E-06	1.95E-11	9.02E-10	2.02E-09	1.87E-09	4.85E-08	1.54E-07
Land Use related impacts/ Soil quality (**)	dimensionless	2.36E+02	7.10E-03	5.35E-01	7.35E-01	2.04E+00	1.32E+00	-1.53E+01

(*) **Disclaimer:** This impact category deals mainly with the eventual impact of low dose ionizing radiation on human health of the nuclear fuel cycle. It does not consider effects due to possible nuclear accidents, occupational exposure nor due to radioactive waste disposal in underground facilities. Potential ionizing radiation from the soil, from radon and from some construction materials is also not measured by this indicator.

(**) **Disclaimer:** the results of this Environmental impacts indicator shall be used with care as the uncertainties on these results are high or as there is limited experience with the indicator.

5.2 Result of the LCA – Resource use SlimLine 38 window – LTO, 1 m²

The tables below report the results of the resource use for the two glass scenarios: 100% recycling and 100% landfill.

Scenario 100% glass recycling

Table 22 Resource use for 1 m² SlimLine 38 window – LTO, scenario 100% glass recycling

Parameter	Unit	A1-A3	A4	C1	C2	C3	C4	D
PERE	MJ	3.65E+02	1.32E-03	6.68E-01	2.72E-01	6.94E-01	2.70E-01	-1.19E+02
PERM	MJ	0.00E+00	0.00E+00	0.00E+00	0.00E+00	0.00E+00	0.00E+00	0.00E+00
PERT	MJ	3.65E+02	1.32E-03	6.68E-01	2.72E-01	6.94E-01	2.70E-01	-1.19E+02
PENRE	MJ	1.37E+03	2.27E-02	1.70E+00	4.69E+00	2.11E+00	2.04E+00	-4.20E+02
PENRM	MJ	8.28E+01	0.00E+00	0.00E+00	0.00E+00	0.00E+00	0.00E+00	0.00E+00
PENRT	MJ	1.45E+03	2.27E-02	1.70E+00	4.69E+00	2.11E+00	2.04E+00	-4.20E+02
SM	kg	3.52E+00	0.00E+00	0.00E+00	0.00E+00	0.00E+00	0.00E+00	0.00E+00
RSF	MJ	0.00E+00	0.00E+00	0.00E+00	0.00E+00	0.00E+00	0.00E+00	0.00E+00
NRSF	MJ	0.00E+00	0.00E+00	0.00E+00	0.00E+00	0.00E+00	0.00E+00	0.00E+00
FW	m ³	6.04E-01	1.17E-06	6.49E-04	2.42E-04	1.39E-03	1.10E-02	-3.02E-01

Note: PERE – use of renewable primary energy excluding renewable primary energy resources used as raw materials; PERM – use of renewable primary energy resources used as raw materials; PERT – Total use of renewable primary energy resources; PENRE – use of non-renewable primary energy excluding non-renewable primary energy resources used as raw materials; PENRM – use of non-renewable primary energy resources used as raw materials; PENRT – Total use of non-renewable primary energy resources; SM – Use of secondary materials; RSF – Use of renewable secondary fuels; NRSF – use of non-renewable secondary fuels; FW – use of net fresh water.

Scenario 100% glass landfill

Table 23 Resource use for 1 m² SlimLine 38 window – LTO, scenario 100% glass landfill

Parameter	Unit	A1-A3	A4	C1	C2	C3	C4	D
PERE	MJ	3.65E+02	1.32E-03	6.68E-01	1.36E-01	2.23E+00	9.20E-01	-1.10E+02
PERM	MJ	0.00E+00	0.00E+00	0.00E+00	0.00E+00	0.00E+00	0.00E+00	0.00E+00
PERT	MJ	3.65E+02	1.32E-03	6.68E-01	1.36E-01	2.23E+00	9.20E-01	-1.10E+02
PENRE	MJ	1.37E+03	2.27E-02	1.70E+00	2.35E+00	4.13E+00	6.87E+00	-2.56E+02
PENRM	MJ	8.28E+01	0.00E+00	0.00E+00	0.00E+00	0.00E+00	0.00E+00	0.00E+00
PENRT	MJ	1.45E+03	2.27E-02	1.70E+00	2.35E+00	4.13E+00	6.87E+00	-2.56E+02
SM	kg	3.52E+00	0.00E+00	0.00E+00	0.00E+00	0.00E+00	0.00E+00	0.00E+00
RSF	MJ	0.00E+00	0.00E+00	0.00E+00	0.00E+00	0.00E+00	0.00E+00	0.00E+00
NRSF	MJ	0.00E+00	0.00E+00	0.00E+00	0.00E+00	0.00E+00	0.00E+00	0.00E+00
FW	m ³	6.04E-01	1.17E-06	6.49E-04	1.21E-04	1.20E-03	1.21E-02	-2.64E-01

Note: PERE – use of renewable primary energy excluding renewable primary energy resources used as raw materials; PERM – use of renewable primary energy resources used as raw materials; PERT – Total use of renewable primary energy resources; PENRE – use of non-renewable primary energy excluding non-renewable primary energy resources used as raw materials; PENRM – use of non-renewable primary energy resources used as raw materials; PENRT – Total use of non-renewable primary energy resources; SM – Use of secondary materials; RSF – Use of renewable secondary fuels; NRSF – use of non-renewable secondary fuels; FW – use of net fresh water.

5.3 Result of the LCA – Output flows, waste categories

Scenario 100% glass recycling

Table 24 Output flows, waste categories for 1 m² SlimLine 38 window – LTO, scenario 100% glass recycling

Parameter	Unit	A1-A3	A4	C1	C2	C3	C4	D
HWD	kg	8.83E-07	9.47E-13	3.86E-10	1.96E-10	2.04E-09	4.36E-10	-1.37E-07
NHWD	kg	1.12E+01	3.66E-06	1.05E-03	7.58E-04	2.04E-02	8.94E-01	-5.60E+00
RWD	kg	3.80E-02	2.18E-08	2.11E-04	4.50E-06	-1.96E-04	5.93E-05	-1.89E-02
CRU	kg	0.00E+00	0.00E+00	0.00E+00	0.00E+00	0.00E+00	0.00E+00	0.00E+00
MFR	kg	0.00E+00	0.00E+00	0.00E+00	0.00E+00	3.09E+01	0.00E+00	0.00E+00
MER	kg	0.00E+00	0.00E+00	0.00E+00	0.00E+00	0.00E+00	0.00E+00	0.00E+00
EEE	MJ	0.00E+00	0.00E+00	0.00E+00	0.00E+00	0.00E+00	7.74E+00	0.00E+00
EET	MJ	0.00E+00	0.00E+00	0.00E+00	0.00E+00	0.00E+00	1.40E+01	0.00E+00

Note: HWD – hazardous waste disposed; NHWD – Non-hazardous waste disposed; RWD – Radioactive waste disposed; CRU – Components for re-use; MFR – Materials for recycling; MER – Materials for energy recovery; EEE – Exported electrical energy; EET – Exported thermal energy.

Scenario 100% glass landfill

Table 25 Output flows, waste categories for 1 m² SlimLine 38 window – LTO, scenario 100% glass landfill

Parameter	Unit	A1-A3	A4	C1	C2	C3	C4	D
HWD	kg	8.83E-07	9.47E-13	3.86E-10	9.81E-11	3.21E-09	9.50E-10	-1.35E-07
NHWD	kg	1.12E+01	3.66E-06	1.05E-03	3.79E-04	4.27E-03	2.50E+01	-5.02E+00
RWD	kg	3.80E-02	2.18E-08	2.11E-04	2.25E-06	3.88E-04	1.10E-04	-1.64E-02
CRU	kg	0.00E+00	0.00E+00	0.00E+00	0.00E+00	0.00E+00	0.00E+00	0.00E+00
MFR	kg	0.00E+00	0.00E+00	0.00E+00	0.00E+00	7.54E+00	0.00E+00	0.00E+00
MER	kg	0.00E+00	0.00E+00	0.00E+00	0.00E+00	0.00E+00	0.00E+00	0.00E+00
EEE	MJ	0.00E+00	0.00E+00	0.00E+00	0.00E+00	0.00E+00	7.74E+00	0.00E+00
EET	MJ	0.00E+00	0.00E+00	0.00E+00	0.00E+00	0.00E+00	1.40E+01	0.00E+00

Note: HWD – hazardous waste disposed; NHWD – Non-hazardous waste disposed; RWD – Radioactive waste disposed; CRU – Components for re-use; MFR – Materials for recycling; MER – Materials for energy recovery; EEE – Exported electrical energy; EET – Exported thermal energy.

6 LCA RESULTS – SlimLine 38 window – SDO

6.1 Result of the LCA – Environmental impacts

The tables below report the results of the LCA study for the two glass scenarios: 100% recycling and 100% landfill.

6.1.1 Core Environmental impacts indicators

Scenario 100% glass recycling

Table 26 Core Environmental impacts indicators for 1 m² SlimLine 38 window – SDO, scenario 100% glass recycling

Impact category	Unit	A1-A3	A4	C1	C2	C3	C4	D
GWP - total	kg CO ₂ eq.	1.00E+02	1.43E-03	9.83E-02	3.02E-01	1.02E+00	5.75E+00	-3.28E+01
GWP – fossil	kg CO ₂ eq.	1.00E+02	1.42E-03	9.82E-02	3.00E-01	8.45E-01	5.75E+00	-3.27E+01
GWP – biogenic	kg CO ₂ eq.	2.38E-01	7.14E-07	-1.15E-04	1.51E-04	1.71E-01	2.05E-04	-9.56E-02
GWP - luluc	kg CO ₂ eq.	6.10E-02	9.22E-06	2.28E-04	1.95E-03	4.38E-03	1.65E-04	-1.04E-02
ODP	kg CFC 11 eq.	3.79E-10	3.68E-19	1.91E-15	7.77E-17	9.99E-15	1.13E-15	-1.40E-10
AP	mol H ⁺ eq.	4.24E-01	8.02E-06	2.53E-04	1.70E-03	1.24E-03	5.19E-03	-1.73E-01
EP - freshwater	kg PO ₄ ³⁻ eq.	3.90E-04	2.95E-09	2.50E-07	6.24E-07	2.63E-06	2.68E-06	-2.68E-05
EP - marine	kg N eq.	1.09E-01	3.95E-06	8.08E-05	8.35E-04	7.23E-04	2.55E-03	-2.81E-02
EP - terrestrial	mol N eq.	1.20E+00	4.37E-05	8.72E-04	9.25E-03	8.17E-03	2.88E-02	-3.50E-01
POCP	kg NMVOC eq.	2.97E-01	7.56E-06	2.23E-04	1.60E-03	1.29E-03	6.54E-03	-7.84E-02
ADP-MM (**)	kg Sb eq.	2.45E-03	1.25E-10	2.50E-08	2.64E-08	1.32E-07	2.11E-08	-2.08E-03
ADPF (**)	MJ	1.53E+03	1.90E-02	1.65E+00	4.02E+00	3.54E+00	2.56E+00	-4.06E+02
WDP (**)	m ³	2.28E+01	5.58E-06	1.28E-02	1.18E-03	7.49E-02	5.93E-01	-4.72E+00

Note: GWP – Global Warming Potential; ODP – Ozone Depletion; AP – acidification potential for soil and water; EP – Eutrophication potential; POCP – formation potential of tropospheric ozone; ADP - MM – abiotic depletion potential for non fossil resources; ADPF – Abiotic depletion potential for fossil resources; WDP – Water deprivation potential.

(**) **Disclaimer:** the results of this Environmental impacts indicator shall be used with care as the uncertainties on these results are high or as there is limited experience with the indicator.

Scenario 100% glass landfill

Table 27 Core Environmental impacts indicators for 1 m² SlimLine 38 window – SDO, scenario 100% glass landfill

Impact category	Unit	A1-A3	A4	C1	C2	C3	C4	D
GWP - total	kg CO ₂ eq.	1.00E+02	1.43E-03	9.83E-02	1.82E-01	3.92E-01	5.99E+00	-2.26E+01
GWP – fossil	kg CO ₂ eq.	1.00E+02	1.42E-03	9.82E-02	1.80E-01	3.89E-01	6.00E+00	-2.25E+01
GWP – biogenic	kg CO ₂ eq.	2.38E-01	7.14E-07	-1.15E-04	9.07E-05	2.41E-03	-7.04E-03	-8.44E-02
GWP - luluc	kg CO ₂ eq.	6.10E-02	9.22E-06	2.28E-04	1.17E-03	9.47E-04	8.98E-04	-5.70E-03
ODP	kg CFC 11 eq.	3.79E-10	3.68E-19	1.91E-15	4.67E-17	1.22E-14	2.10E-15	-1.40E-10
AP	mol H ⁺ eq.	4.24E-01	8.02E-06	2.53E-04	1.02E-03	6.67E-04	6.96E-03	-1.17E-01
EP - freshwater	kg PO ₄ ³⁻ eq.	3.90E-04	2.95E-09	2.50E-07	3.75E-07	1.64E-06	3.10E-06	-1.89E-05
EP - marine	kg N eq.	1.09E-01	3.95E-06	8.08E-05	5.02E-04	1.87E-04	3.01E-03	-1.65E-02
EP - terrestrial	mol N eq.	1.20E+00	4.37E-05	8.72E-04	5.56E-03	1.95E-03	3.38E-02	-1.80E-01
POCP	kg NMVOC eq.	2.97E-01	7.56E-06	2.23E-04	9.61E-04	4.71E-04	7.94E-03	-5.01E-02
ADP-MM (**)	kg Sb eq.	2.45E-03	1.25E-10	2.50E-08	1.59E-08	1.48E-07	4.46E-08	-2.08E-03
ADPF (**)	MJ	1.53E+03	1.90E-02	1.65E+00	2.42E+00	4.92E+00	5.86E+00	-2.94E+02
WDP (**)	m ³	2.28E+01	5.58E-06	1.28E-02	7.09E-04	8.73E-03	6.20E-01	-3.75E+00

Note: GWP – Global Warming Potential; ODP – Ozone Depletion; AP – acidification potential for soil and water; EP – Eutrophication potential; POCP – formation potential of tropospheric ozone; ADP - MM – abiotic depletion potential for non fossil resources; ADPF – Abiotic depletion potential for fossil resources; WDP – Water deprivation potential.

(**) **Disclaimer:** the results of this Environmental impacts indicator shall be used with care as the uncertainties on these results are high or as there is limited experience with the indicator.

6.1.2 Additional Environmental impacts indicators

Scenario 100% glass recycling

Table 28 Additional Environmental impacts indicators for 1 m² SlimLine 38 window – SDO, scenario 100% glass recycling

Impact category	Unit	A1-A3	A4	C1	C2	C3	C4	D
Particular Matter emissions	Disease incidence	4.49E-06	2.75E-11	2.40E-09	5.81E-09	1.77E-09	1.88E-08	-2.23E-06
Ionising radiation - human health (*)	[kBq U235 eq.]	1.09E+01	1.74E-06	3.46E-02	3.67E-04	-2.94E-02	1.11E-02	-3.72E+00
Eco-toxicity (freshwater) (**)	[CTUe]	1.95E+03	1.58E-02	7.93E-01	3.34E+00	4.94E+00	1.12E+00	-9.92E+02
Human toxicity - cancer effects (**)	[CTUh]	3.54E-07	3.13E-13	2.08E-11	6.61E-11	9.41E-11	7.07E-11	-1.08E-09
Human toxicity - non-cancer effects (**)	[CTUh]	3.40E-06	1.64E-11	8.59E-10	3.46E-09	4.57E-09	4.62E-09	3.86E-07
Land Use related impacts/ Soil quality (**)	dimensionless	2.38E+02	5.96E-03	5.21E-01	1.26E+00	3.86E+00	4.47E-01	-2.89E+01

(*) **Disclaimer:** This impact category deals mainly with the eventual impact of low dose ionizing radiation on human health of the nuclear fuel cycle. It does not consider effects due to possible nuclear accidents, occupational exposure nor due to radioactive waste disposal in underground facilities. Potential ionizing radiation from the soil, from radon and from some construction materials is also not measured by this indicator.

(**) **Disclaimer:** the results of this Environmental impacts indicator shall be used with care as the uncertainties on these results are high or as there is limited experience with the indicator.

Scenario 100% glass landfill

Table 29 Additional Environmental impacts indicators for 1 m² SlimLine 38 window – SDO, scenario 100% glass landfill

Impact category	Unit	A1-A3	A4	C1	C2	C3	C4	D
Particular Matter emissions	Disease incidence	4.49E-06	2.75E-11	2.40E-09	3.49E-09	4.92E-09	4.08E-08	-1.59E-06
Ionising radiation - human health (*)	[kBq U235 eq.]	1.09E+01	1.74E-06	3.46E-02	2.21E-04	4.56E-02	1.48E-02	-3.45E+00
Eco-toxicity (freshwater) (**)	[CTUe]	1.95E+03	1.58E-02	7.93E-01	2.01E+00	1.96E+00	3.01E+00	-9.85E+01
Human toxicity - cancer effects (**)	[CTUh]	3.54E-07	3.13E-13	2.08E-11	3.97E-11	2.71E-10	3.49E-10	5.75E-10
Human toxicity - non-cancer effects (**)	[CTUh]	3.40E-06	1.64E-11	8.59E-10	2.08E-09	2.24E-09	3.53E-08	5.76E-07
Land Use related impacts/ Soil quality (**)	dimensionless	2.38E+02	5.96E-03	5.21E-01	7.58E-01	2.43E+00	1.11E+00	-2.23E+01

(*) **Disclaimer:** This impact category deals mainly with the eventual impact of low dose ionizing radiation on human health of the nuclear fuel cycle. It does not consider effects due to possible nuclear accidents, occupational exposure nor due to radioactive waste disposal in underground facilities. Potential ionizing radiation from the soil, from radon and from some construction materials is also not measured by this indicator.

(**) **Disclaimer:** the results of this Environmental impacts indicator shall be used with care as the uncertainties on these results are high or as there is limited experience with the indicator.

6.2 Result of the LCA – Resource use SlimLine 38 window – SDO, 1 m²

The tables below report the results of the resource use for the two glass scenarios: 100% recycling and 100% landfill.

Scenario 100% glass recycling

Table 30 Resource use for 1 m² SlimLine 38 window – SDO, scenario 100% glass recycling

Parameter	Unit	A1-A3	A4	C1	C2	C3	C4	D
PERE	MJ	3.81E+02	1.11E-03	6.66E-01	2.34E-01	1.61E+00	3.47E-01	-1.32E+02
PERM	MJ	0.00E+00	0.00E+00	0.00E+00	0.00E+00	0.00E+00	0.00E+00	0.00E+00
PERT	MJ	3.81E+02	1.11E-03	6.66E-01	2.34E-01	1.61E+00	3.47E-01	-1.32E+02
PENRE	MJ	1.30E+03	1.90E-02	1.65E+00	4.02E+00	3.54E+00	2.56E+00	-4.06E+02
PENRM	MJ	1.06E+02	0.00E+00	0.00E+00	0.00E+00	0.00E+00	0.00E+00	0.00E+00
PENRT	MJ	1.40E+03	1.90E-02	1.65E+00	4.02E+00	3.54E+00	2.56E+00	-4.06E+02
SM	kg	4.31E+00	0.00E+00	0.00E+00	0.00E+00	0.00E+00	0.00E+00	0.00E+00
RSF	MJ	0.00E+00	0.00E+00	0.00E+00	0.00E+00	0.00E+00	0.00E+00	0.00E+00
NRSF	MJ	0.00E+00	0.00E+00	0.00E+00	0.00E+00	0.00E+00	0.00E+00	0.00E+00
FW	m ³	6.29E-01	9.82E-07	6.47E-04	2.08E-04	1.56E-03	1.40E-02	-3.17E-01

Note: PERE – use of renewable primary energy excluding renewable primary energy resources used as raw materials; PERM – use of renewable primary energy resources used as raw materials; PERT – Total use of renewable primary energy resources; PENRE – use of non-renewable primary energy excluding non-renewable primary energy resources used as raw materials; PENRM – use of non-renewable primary energy resources used as raw materials; PENRT – Total use of non-renewable primary energy resources; SM – Use of secondary materials; RSF – Use of renewable secondary fuels; NRSF – use of non-renewable secondary fuels; FW – use of net fresh water.

Scenario 100% glass landfill

Table 31 Resource use for 1 m² SlimLine 38 window – SDO, scenario 100% glass landfill

Parameter	Unit	A1-A3	A4	C1	C2	C3	C4	D
PERE	MJ	3.81E+02	1.11E-03	6.66E-01	1.40E-01	2.66E+00	7.92E-01	-1.26E+02
PERM	MJ	0.00E+00	0.00E+00	0.00E+00	0.00E+00	0.00E+00	0.00E+00	0.00E+00
PERT	MJ	3.81E+02	1.11E-03	6.66E-01	1.40E-01	2.66E+00	7.92E-01	-1.26E+02
PENRE	MJ	1.30E+03	1.90E-02	1.65E+00	2.42E+00	4.92E+00	5.87E+00	-2.94E+02
PENRM	MJ	1.06E+02	0.00E+00	0.00E+00	0.00E+00	0.00E+00	0.00E+00	0.00E+00
PENRT	MJ	1.40E+03	1.90E-02	1.65E+00	2.42E+00	4.92E+00	5.87E+00	-2.94E+02
SM	kg	4.31E+00	0.00E+00	0.00E+00	0.00E+00	0.00E+00	0.00E+00	0.00E+00
RSF	MJ	0.00E+00	0.00E+00	0.00E+00	0.00E+00	0.00E+00	0.00E+00	0.00E+00
NRSF	MJ	0.00E+00	0.00E+00	0.00E+00	0.00E+00	0.00E+00	0.00E+00	0.00E+00
FW	m ³	6.29E-01	9.82E-07	6.47E-04	1.25E-04	1.43E-03	1.48E-02	-2.91E-01

Note: PERE – use of renewable primary energy excluding renewable primary energy resources used as raw materials; PERM – use of renewable primary energy resources used as raw materials; PERT – Total use of renewable primary energy resources; PENRE – use of non-renewable primary energy excluding non-renewable primary energy resources used as raw materials; PENRM – use of non-renewable primary energy resources used as raw materials; PENRT – Total use of non-renewable primary energy resources; SM – Use of secondary materials; RSF – Use of renewable secondary fuels; NRSF – use of non-renewable secondary fuels; FW – use of net fresh water.

6.3 Result of the LCA – Output flows, waste categories

Scenario 100% glass recycling

Table 32 Output flows, waste categories for 1 m² SlimLine 38 window – SDO, scenario 100% glass recycling

Parameter	Unit	A1-A3	A4	C1	C2	C3	C4	D
HWD	kg	9.70E-07	7.96E-13	3.84E-10	1.68E-10	3.02E-09	5.46E-10	-1.52E-07
NHWD	kg	1.10E+01	3.07E-06	1.04E-03	6.50E-04	1.61E-02	1.09E+00	-5.77E+00
RWD	kg	4.29E-02	1.83E-08	2.11E-04	3.86E-06	6.33E-05	7.58E-05	-2.16E-02
CRU	kg	0.00E+00	0.00E+00	0.00E+00	0.00E+00	0.00E+00	0.00E+00	0.00E+00
MFR	kg	0.00E+00	0.00E+00	0.00E+00	0.00E+00	2.48E+01	0.00E+00	0.00E+00
MER	kg	0.00E+00	0.00E+00	0.00E+00	0.00E+00	0.00E+00	0.00E+00	0.00E+00
EEE	MJ	0.00E+00	0.00E+00	0.00E+00	0.00E+00	0.00E+00	9.94E+00	0.00E+00
EET	MJ	0.00E+00	0.00E+00	0.00E+00	0.00E+00	0.00E+00	1.80E+01	0.00E+00

Note: HWD – hazardous waste disposed; NHWD – Non-hazardous waste disposed; RWD – Radioactive waste disposed; CRU – Components for re-use; MFR – Materials for recycling; MER – Materials for energy recovery; EEE – Exported electrical energy; EET – Exported thermal energy.

Scenario 100% glass landfill

Table 33 Output flows, waste categories for 1 m² SlimLine 38 window – SDO, scenario 100% glass landfill

Parameter	Unit	A1-A3	A4	C1	C2	C3	C4	D
HWD	kg	9.70E-07	7.96E-13	3.84E-10	1.01E-10	3.82E-09	8.97E-10	-1.51E-07
NHWD	kg	1.10E+01	3.07E-06	1.04E-03	3.91E-04	5.09E-03	1.76E+01	-5.38E+00
RWD	kg	4.29E-02	1.83E-08	2.11E-04	2.32E-06	4.63E-04	1.10E-04	-1.98E-02
CRU	kg	0.00E+00	0.00E+00	0.00E+00	0.00E+00	0.00E+00	0.00E+00	0.00E+00
MFR	kg	0.00E+00	0.00E+00	0.00E+00	0.00E+00	8.81E+00	0.00E+00	0.00E+00
MER	kg	0.00E+00	0.00E+00	0.00E+00	0.00E+00	0.00E+00	0.00E+00	0.00E+00
EEE	MJ	0.00E+00	0.00E+00	0.00E+00	0.00E+00	0.00E+00	9.94E+00	0.00E+00
EET	MJ	0.00E+00	0.00E+00	0.00E+00	0.00E+00	0.00E+00	1.80E+01	0.00E+00

Note: HWD – hazardous waste disposed; NHWD – Non-hazardous waste disposed; RWD – Radioactive waste disposed; CRU – Components for re-use; MFR – Materials for recycling; MER – Materials for energy recovery; EEE – Exported electrical energy; EET – Exported thermal energy.

7 LCA RESULTS – SlimLine 38 window – STO

7.1 Result of the LCA – Environmental impacts

The tables below report the results of the LCA study for the two glass scenarios: 100% recycling and 100% landfill.

7.1.1 Core Environmental impacts indicators

Scenario 100% glass recycling

Table 34 Core Environmental impacts indicators for 1 m² SlimLine 38 window – STO, scenario 100% glass recycling

Impact category	Unit	A1-A3	A4	C1	C2	C3	C4	D
GWP - total	kg CO ₂ eq.	1.20E+02	1.80E-03	1.03E-01	3.76E-01	1.30E+00	5.61E+00	-3.93E+01
GWP – fossil	kg CO ₂ eq.	1.20E+02	1.79E-03	1.03E-01	3.73E-01	1.06E+00	5.61E+00	-3.92E+01
GWP – biogenic	kg CO ₂ eq.	3.08E-01	9.01E-07	-3.22E-04	1.88E-04	2.39E-01	1.69E-04	-1.03E-01
GWP - luluc	kg CO ₂ eq.	7.74E-02	1.16E-05	2.59E-04	2.42E-03	5.82E-03	1.65E-04	-1.24E-02
ODP	kg CFC 11 eq.	4.33E-10	4.64E-19	1.91E-15	9.66E-17	1.01E-14	1.11E-15	-1.60E-10
AP	mol H ⁺ eq.	4.92E-01	1.01E-05	2.76E-04	2.11E-03	1.52E-03	5.10E-03	-2.10E-01
EP - freshwater	kg PO ₄ ³⁻ eq.	4.45E-04	3.73E-09	2.60E-07	7.76E-07	3.16E-06	2.62E-06	-3.04E-05
EP - marine	kg N eq.	1.40E-01	4.99E-06	9.17E-05	1.04E-03	9.53E-04	2.51E-03	-3.47E-02
EP - terrestrial	mol N eq.	1.57E+00	5.52E-05	9.92E-04	1.15E-02	1.08E-02	2.83E-02	-4.40E-01
POCP	kg NMVOC eq.	3.89E-01	9.54E-06	2.54E-04	1.99E-03	1.66E-03	6.43E-03	-9.58E-02
ADP-MM (**)	kg Sb eq.	2.30E-03	1.58E-10	2.54E-08	3.28E-08	1.38E-07	2.08E-08	-1.94E-03
ADPF (**)	MJ	1.80E+03	2.40E-02	1.72E+00	5.00E+00	3.38E+00	2.52E+00	-4.79E+02
WDP (**)	m ³	2.41E+01	7.04E-06	1.28E-02	1.47E-03	1.02E-01	5.79E-01	-5.43E+00

Note: GWP – Global Warming Potential; ODP – Ozone Depletion; AP – acidification potential for soil and water; EP – Eutrophication potential; POCP – formation potential of tropospheric ozone; ADP - MM – abiotic depletion potential for non fossil resources; ADPF – Abiotic depletion potential for fossil resources; WDP – Water deprivation potential.

(**) **Disclaimer:** the results of this Environmental impacts indicator shall be used with care as the uncertainties on these results are high or as there is limited experience with the indicator.

Scenario 100% glass landfill

Table 35 Core Environmental impacts indicators for 1 m² SlimLine 38 window – STO, scenario 100% glass landfill

Impact category	Unit	A1-A3	A4	C1	C2	C3	C4	D
GWP - total	kg CO ₂ eq.	1.20E+02	1.80E-03	1.03E-01	2.07E-01	4.24E-01	5.95E+00	-2.50E+01
GWP – fossil	kg CO ₂ eq.	1.20E+02	1.79E-03	1.03E-01	2.06E-01	4.20E-01	5.96E+00	-2.49E+01
GWP – biogenic	kg CO ₂ eq.	3.08E-01	9.01E-07	-3.22E-04	1.03E-04	2.61E-03	-9.97E-03	-8.74E-02
GWP - luluc	kg CO ₂ eq.	7.74E-02	1.16E-05	2.59E-04	1.34E-03	1.02E-03	1.19E-03	-5.82E-03
ODP	kg CFC 11 eq.	4.33E-10	4.64E-19	1.91E-15	5.32E-17	1.32E-14	2.46E-15	-1.60E-10
AP	mol H ⁺ eq.	4.92E-01	1.01E-05	2.76E-04	1.16E-03	7.20E-04	7.59E-03	-1.32E-01
EP - freshwater	kg PO ₄ ³⁻ eq.	4.45E-04	3.73E-09	2.60E-07	4.28E-07	1.78E-06	3.21E-06	-1.94E-05
EP - marine	kg N eq.	1.40E-01	4.99E-06	9.17E-05	5.72E-04	2.02E-04	3.15E-03	-1.85E-02
EP - terrestrial	mol N eq.	1.57E+00	5.52E-05	9.92E-04	6.33E-03	2.11E-03	3.54E-02	-2.01E-01
POCP	kg NMVOC eq.	3.89E-01	9.54E-06	2.54E-04	1.10E-03	5.09E-04	8.39E-03	-5.60E-02
ADP-MM (**)	kg Sb eq.	2.30E-03	1.58E-10	2.54E-08	1.81E-08	1.60E-07	5.37E-08	-1.94E-03
ADPF (**)	MJ	1.80E+03	2.40E-02	1.72E+00	2.76E+00	5.31E+00	7.15E+00	-3.22E+02
WDP (**)	m ³	2.41E+01	7.04E-06	1.28E-02	8.09E-04	9.43E-03	6.17E-01	-4.07E+00

Note: GWP – Global Warming Potential; ODP – Ozone Depletion; AP – acidification potential for soil and water; EP – Eutrophication potential; POCP – formation potential of tropospheric ozone; ADP - MM – abiotic depletion potential for non fossil resources; ADPF – Abiotic depletion potential for fossil resources; WDP – Water deprivation potential.

(**) **Disclaimer:** the results of this Environmental impacts indicator shall be used with care as the uncertainties on these results are high or as there is limited experience with the indicator.

7.1.2 Additional Environmental impacts indicators

Scenario 100% glass recycling

Table 36 Additional Environmental impacts indicators for 1 m² SlimLine 38 window – STO, scenario 100% glass recycling

Impact category	Unit	A1-A3	A4	C1	C2	C3	C4	D
Particular Matter emissions	Disease incidence	5.22E-06	3.47E-11	2.66E-09	7.23E-09	9.07E-10	1.85E-08	-2.69E-06
Ionising radiation - human health (*)	[kBq U235 eq.]	1.22E+01	2.19E-06	3.46E-02	4.57E-04	-5.58E-02	1.09E-02	-4.17E+00
Eco-toxicity (freshwater) (**)	[CTUe]	2.69E+03	1.99E-02	8.45E-01	4.16E+00	6.29E+00	1.11E+00	-1.36E+03
Human toxicity - cancer effects (**)	[CTUh]	2.96E-07	3.94E-13	2.18E-11	8.22E-11	4.52E-11	7.05E-11	-2.73E-09
Human toxicity - non-cancer effects (**)	[CTUh]	3.68E-06	2.07E-11	9.18E-10	4.30E-09	5.68E-09	4.66E-09	2.44E-07
Land Use related impacts/ Soil quality (**)	dimensionless	2.76E+02	7.52E-03	5.41E-01	1.57E+00	4.63E+00	4.41E-01	-3.16E+01

(*) **Disclaimer:** This impact category deals mainly with the eventual impact of low dose ionizing radiation on human health of the nuclear fuel cycle. It does not consider effects due to possible nuclear accidents, occupational exposure nor due to radioactive waste disposal in underground facilities. Potential ionizing radiation from the soil, from radon and from some construction materials is also not measured by this indicator.

(**) **Disclaimer:** the results of this Environmental impacts indicator shall be used with care as the uncertainties on these results are high or as there is limited experience with the indicator.

Scenario 100% glass landfill

Table 37 Additional Environmental impacts indicators for 1 m² SlimLine 38 window – STO, scenario 100% glass landfill

Impact category	Unit	A1-A3	A4	C1	C2	C3	C4	D
Particular Matter emissions	Disease incidence	5.22E-06	3.47E-11	2.66E-09	3.98E-09	5.32E-09	4.94E-08	-1.80E-06
Ionising radiation - human health (*)	[kBq U235 eq.]	1.22E+01	2.19E-06	3.46E-02	2.52E-04	4.93E-02	1.60E-02	-3.78E+00
Eco-toxicity (freshwater) (**)	[CTUe]	2.69E+03	1.99E-02	8.45E-01	2.29E+00	2.12E+00	3.75E+00	-1.08E+02
Human toxicity - cancer effects (**)	[CTUh]	2.96E-07	3.94E-13	2.18E-11	4.53E-11	2.93E-10	4.59E-10	-4.17E-10
Human toxicity - non-cancer effects (**)	[CTUh]	3.68E-06	2.07E-11	9.18E-10	2.37E-09	2.42E-09	4.76E-08	5.09E-07
Land Use related impacts/ Soil quality (**)	dimensionless	2.76E+02	7.52E-03	5.41E-01	8.64E-01	2.63E+00	1.38E+00	-2.24E+01

(*) **Disclaimer:** This impact category deals mainly with the eventual impact of low dose ionizing radiation on human health of the nuclear fuel cycle. It does not consider effects due to possible nuclear accidents, occupational exposure nor due to radioactive waste disposal in underground facilities. Potential ionizing radiation from the soil, from radon and from some construction materials is also not measured by this indicator.

(**) **Disclaimer:** the results of this Environmental impacts indicator shall be used with care as the uncertainties on these results are high or as there is limited experience with the indicator.

7.2 Result of the LCA – Resource use SlimLine 38 window – STO, 1 m²

The tables below report the results of the resource use for the two glass scenarios: 100% recycling and 100% landfill.

Scenario 100% glass recycling

Table 38 Resource use for 1 m² SlimLine 38 window – STO, scenario 100% glass recycling

Parameter	Unit	A1-A3	A4	C1	C2	C3	C4	D
PERE	MJ	4.38E+02	1.39E-03	6.69E-01	2.90E-01	1.40E+00	3.42E-01	-1.48E+02
PERM	MJ	0.00E+00	0.00E+00	0.00E+00	0.00E+00	0.00E+00	0.00E+00	0.00E+00
PERT	MJ	4.38E+02	1.39E-03	6.69E-01	2.90E-01	1.40E+00	3.42E-01	-1.48E+02
PENRE	MJ	1.55E+03	2.40E-02	1.72E+00	5.00E+00	3.38E+00	2.52E+00	-4.80E+02
PENRM	MJ	1.03E+02	0.00E+00	0.00E+00	0.00E+00	0.00E+00	0.00E+00	0.00E+00
PENRT	MJ	1.65E+03	2.40E-02	1.72E+00	5.00E+00	3.38E+00	2.52E+00	-4.80E+02
SM	kg	4.80E+00	0.00E+00	0.00E+00	0.00E+00	0.00E+00	0.00E+00	0.00E+00
RSF	MJ	0.00E+00	0.00E+00	0.00E+00	0.00E+00	0.00E+00	0.00E+00	0.00E+00
NRSF	MJ	0.00E+00	0.00E+00	0.00E+00	0.00E+00	0.00E+00	0.00E+00	0.00E+00
FW	m ³	7.08E-01	1.24E-06	6.50E-04	2.58E-04	1.73E-03	1.37E-02	-3.63E-01

Note: PERE – use of renewable primary energy excluding renewable primary energy resources used as raw materials; PERM – use of renewable primary energy resources used as raw materials; PERT – Total use of renewable primary energy resources; PENRE – use of non-renewable primary energy excluding non-renewable primary energy resources used as raw materials; PENRM – use of non-renewable primary energy resources used as raw materials; PENRT – Total use of non-renewable primary energy resources; SM – Use of secondary materials; RSF – Use of renewable secondary fuels; NRSF – use of non-renewable secondary fuels; FW – use of net fresh water.

Scenario 100% glass landfill

Table 39 Resource use for 1 m² SlimLine 38 window – STO, scenario 100% glass landfill

Parameter	Unit	A1-A3	A4	C1	C2	C3	C4	D
PERE	MJ	4.38E+02	1.39E-03	6.69E-01	1.60E-01	2.87E+00	9.65E-01	-1.39E+02
PERM	MJ	0.00E+00	0.00E+00	0.00E+00	0.00E+00	0.00E+00	0.00E+00	0.00E+00
PERT	MJ	4.38E+02	1.39E-03	6.69E-01	1.60E-01	2.87E+00	9.65E-01	-1.39E+02
PENRE	MJ	1.55E+03	2.40E-02	1.72E+00	2.76E+00	5.32E+00	7.15E+00	-3.23E+02
PENRM	MJ	1.03E+02	0.00E+00	0.00E+00	0.00E+00	0.00E+00	0.00E+00	0.00E+00
PENRT	MJ	1.65E+03	2.40E-02	1.72E+00	2.76E+00	5.32E+00	7.15E+00	-3.23E+02
SM	kg	4.80E+00	0.00E+00	0.00E+00	0.00E+00	0.00E+00	0.00E+00	0.00E+00
RSF	MJ	0.00E+00	0.00E+00	0.00E+00	0.00E+00	0.00E+00	0.00E+00	0.00E+00
NRSF	MJ	0.00E+00	0.00E+00	0.00E+00	0.00E+00	0.00E+00	0.00E+00	0.00E+00
FW	m ³	7.08E-01	1.24E-06	6.50E-04	1.42E-04	1.55E-03	1.48E-02	-3.26E-01

Note: PERE – use of renewable primary energy excluding renewable primary energy resources used as raw materials; PERM – use of renewable primary energy resources used as raw materials; PERT – Total use of renewable primary energy resources; PENRE – use of non-renewable primary energy excluding non-renewable primary energy resources used as raw materials; PENRM – use of non-renewable primary energy resources used as raw materials; PENRT – Total use of non-renewable primary energy resources; SM – Use of secondary materials; RSF – Use of renewable secondary fuels; NRSF – use of non-renewable secondary fuels; FW – use of net fresh water.

7.3 Result of the LCA – Output flows, waste categories

Scenario 100% glass recycling

Table 40 Output flows, waste categories for 1 m² SlimLine 38 window – STO, scenario 100% glass recycling

Parameter	Unit	A1-A3	A4	C1	C2	C3	C4	D
HWD	kg	1.05E-06	1.00E-12	3.87E-10	2.09E-10	3.01E-09	5.37E-10	-1.69E-07
NHWD	kg	1.29E+01	3.88E-06	1.05E-03	8.08E-04	2.10E-02	1.14E+00	-6.66E+00
RWD	kg	4.75E-02	2.30E-08	2.11E-04	4.80E-06	-5.93E-05	7.44E-05	-2.39E-02
CRU	kg	0.00E+00	0.00E+00	0.00E+00	0.00E+00	0.00E+00	0.00E+00	0.00E+00
MFR	kg	0.00E+00	0.00E+00	0.00E+00	0.00E+00	3.21E+01	0.00E+00	0.00E+00
MER	kg	0.00E+00	0.00E+00	0.00E+00	0.00E+00	0.00E+00	0.00E+00	0.00E+00
EEE	MJ	0.00E+00	0.00E+00	0.00E+00	0.00E+00	0.00E+00	9.70E+00	0.00E+00
EET	MJ	0.00E+00	0.00E+00	0.00E+00	0.00E+00	0.00E+00	1.76E+01	0.00E+00

Note: HWD – hazardous waste disposed; NHWD – Non-hazardous waste disposed; RWD – Radioactive waste disposed; CRU – Components for re-use; MFR – Materials for recycling; MER – Materials for energy recovery; EEE – Exported electrical energy; EET – Exported thermal energy.

Scenario 100% glass landfill

Table 41 Output flows, waste categories for 1 m² SlimLine 38 window – STO, scenario 100% glass landfill

Parameter	Unit	A1-A3	A4	C1	C2	C3	C4	D
HWD	kg	1.05E-06	1.00E-12	3.87E-10	1.15E-10	4.13E-09	1.03E-09	-1.67E-07
NHWD	kg	1.29E+01	3.88E-06	1.05E-03	4.45E-04	5.50E-03	2.42E+01	-6.11E+00
RWD	kg	4.75E-02	2.30E-08	2.11E-04	2.65E-06	5.01E-04	1.23E-04	-2.15E-02
CRU	kg	0.00E+00	0.00E+00	0.00E+00	0.00E+00	0.00E+00	0.00E+00	0.00E+00
MFR	kg	0.00E+00	0.00E+00	0.00E+00	0.00E+00	9.81E+00	0.00E+00	0.00E+00
MER	kg	0.00E+00	0.00E+00	0.00E+00	0.00E+00	0.00E+00	0.00E+00	0.00E+00
EEE	MJ	0.00E+00	0.00E+00	0.00E+00	0.00E+00	0.00E+00	9.70E+00	0.00E+00
EET	MJ	0.00E+00	0.00E+00	0.00E+00	0.00E+00	0.00E+00	1.76E+01	0.00E+00

Note: HWD – hazardous waste disposed; NHWD – Non-hazardous waste disposed; RWD – Radioactive waste disposed; CRU – Components for re-use; MFR – Materials for recycling; MER – Materials for energy recovery; EEE – Exported electrical energy; EET – Exported thermal energy.

8 LCA RESULTS – SlimLine 38 window – LDN

8.1 Result of the LCA – Environmental impacts

The tables below report the results of the LCA study for the two glass scenarios: 100% recycling and 100% landfill.

8.1.1 Core Environmental impacts indicators

Scenario 100% glass recycling

Table 42 Core Environmental impacts indicators for 1 m² SlimLine 38 window – LDN, scenario 100% glass recycling

Impact category	Unit	A1-A3	A4	C1	C2	C3	C4	D
GWP - total	kg CO ₂ eq.	5.83E+01	1.14E-03	9.47E-02	2.33E-01	8.53E-01	1.73E+00	-2.00E+01
GWP – fossil	kg CO ₂ eq.	5.81E+01	1.13E-03	9.44E-02	2.31E-01	6.57E-01	1.73E+00	-2.00E+01
GWP – biogenic	kg CO ₂ eq.	1.58E-01	5.68E-07	4.61E-05	1.16E-04	1.92E-01	9.27E-05	-3.27E-02
GWP - luluc	kg CO ₂ eq.	3.73E-02	7.34E-06	2.05E-04	1.50E-03	4.23E-03	6.06E-05	-6.75E-03
ODP	kg CFC 11 eq.	1.59E-10	2.93E-19	1.91E-15	5.98E-17	1.83E-15	4.07E-16	-5.83E-11
AP	mol H ⁺ eq.	2.72E-01	6.39E-06	2.35E-04	1.31E-03	8.88E-04	2.24E-03	-1.09E-01
EP - freshwater	kg PO ₄ ³⁻ eq.	1.76E-04	2.35E-09	2.43E-07	4.81E-07	1.71E-06	9.08E-07	-1.31E-05
EP - marine	kg N eq.	8.23E-02	3.15E-06	7.24E-05	6.43E-04	6.76E-04	1.12E-03	-1.95E-02
EP - terrestrial	mol N eq.	9.40E-01	3.48E-05	7.79E-04	7.12E-03	7.76E-03	1.25E-02	-2.63E-01
POCP	kg NMVOC eq.	2.18E-01	6.02E-06	1.99E-04	1.23E-03	1.10E-03	2.87E-03	-5.15E-02
ADP-MM (**)	kg Sb eq.	3.00E-05	9.94E-11	2.46E-08	2.03E-08	3.50E-08	7.89E-09	-2.33E-06
ADPF (**)	MJ	8.24E+02	1.52E-02	1.60E+00	3.10E+00	1.89E-01	9.72E-01	-2.34E+02
WDP (**)	m ³	8.41E+00	4.44E-06	1.28E-02	9.08E-04	7.83E-02	1.94E-01	-2.29E+00

Note: GWP – Global Warming Potential; ODP – Ozone Depletion; AP – acidification potential for soil and water; EP – Eutrophication potential; POCP – formation potential of tropospheric ozone; ADP - MM – abiotic depletion potential for non fossil resources; ADPF – Abiotic depletion potential for fossil resources; WDP – Water deprivation potential.

(**) **Disclaimer:** the results of this Environmental impacts indicator shall be used with care as the uncertainties on these results are high or as there is limited experience with the indicator.

Scenario 100% glass landfill

Table 43 Core Environmental impacts indicators for 1 m² SlimLine 38 window – LDN, scenario 100% glass landfill

Impact category	Unit	A1-A3	A4	C1	C2	C3	C4	D
GWP - total	kg CO ₂ eq.	5.83E+01	1.14E-03	9.47E-02	9.57E-02	1.40E-01	2.01E+00	-8.41E+00
GWP – fossil	kg CO ₂ eq.	5.81E+01	1.13E-03	9.44E-02	9.50E-02	1.39E-01	2.01E+00	-8.39E+00
GWP – biogenic	kg CO ₂ eq.	1.58E-01	5.68E-07	4.61E-05	4.78E-05	8.62E-04	-8.13E-03	-1.99E-02
GWP - luluc	kg CO ₂ eq.	3.73E-02	7.34E-06	2.05E-04	6.17E-04	3.38E-04	8.92E-04	-1.42E-03
ODP	kg CFC 11 eq.	1.59E-10	2.93E-19	1.91E-15	2.46E-17	4.36E-15	1.51E-15	-5.83E-11
AP	mol H ⁺ eq.	2.72E-01	6.39E-06	2.35E-04	5.37E-04	2.38E-04	4.26E-03	-4.53E-02
EP - freshwater	kg PO ₄ ³⁻ eq.	1.76E-04	2.35E-09	2.43E-07	1.98E-07	5.87E-07	1.38E-06	-4.23E-06
EP - marine	kg N eq.	8.23E-02	3.15E-06	7.24E-05	2.65E-04	6.67E-05	1.65E-03	-6.33E-03
EP - terrestrial	mol N eq.	9.40E-01	3.48E-05	7.79E-04	2.93E-03	6.97E-04	1.83E-02	-6.91E-02
POCP	kg NMVOC eq.	2.18E-01	6.02E-06	1.99E-04	5.06E-04	1.68E-04	4.46E-03	-1.93E-02
ADP-MM (**)	kg Sb eq.	3.00E-05	9.94E-11	2.46E-08	8.36E-09	5.27E-08	3.46E-08	-1.86E-06
ADPF (**)	MJ	8.24E+02	1.52E-02	1.60E+00	1.27E+00	1.76E+00	4.73E+00	-1.06E+02
WDP (**)	m ³	8.41E+00	4.44E-06	1.28E-02	3.74E-04	3.12E-03	2.24E-01	-1.19E+00

Note: GWP – Global Warming Potential; ODP – Ozone Depletion; AP – acidification potential for soil and water; EP – Eutrophication potential; POCP – formation potential of tropospheric ozone; ADP - MM – abiotic depletion potential for non fossil resources; ADPF – Abiotic depletion potential for fossil resources; WDP – Water deprivation potential.

() Disclaimer:** the results of this Environmental impacts indicator shall be used with care as the uncertainties on these results are high or as there is limited experience with the indicator.

8.1.2 Additional Environmental impacts indicators

Scenario 100% glass recycling

Table 44 Additional Environmental impacts indicators for 1 m² SlimLine 38 window – LDN, scenario 100% glass recycling

Impact category	Unit	A1-A3	A4	C1	C2	C3	C4	D
Particular Matter emissions	Disease incidence	2.46E-06	2.19E-11	2.19E-09	4.47E-09	-1.82E-09	7.52E-09	-1.36E-06
Ionising radiation - human health (*)	[kBq U235 eq.]	4.54E+00	1.38E-06	3.46E-02	2.83E-04	-6.90E-02	3.77E-03	-1.55E+00
Eco-toxicity (freshwater) (**)	[CTUe]	1.51E+03	1.26E-02	7.53E-01	2.57E+00	4.09E+00	3.97E-01	-1.05E+03
Human toxicity - cancer effects (**)	[CTUh]	1.92E-08	2.49E-13	2.00E-11	5.09E-11	-1.04E-10	2.46E-11	-3.94E-09
Human toxicity - non-cancer effects (**)	[CTUh]	1.58E-06	1.30E-11	8.14E-10	2.66E-09	3.44E-09	1.67E-09	-2.76E-07
Land Use related impacts/ Soil quality (**)	dimensionless	1.11E+02	4.75E-03	5.06E-01	9.70E-01	2.49E+00	1.57E-01	-1.20E+01

(*) **Disclaimer:** This impact category deals mainly with the eventual impact of low dose ionizing radiation on human health of the nuclear fuel cycle. It does not consider effects due to possible nuclear accidents, occupational exposure nor due to radioactive waste disposal in underground facilities. Potential ionizing radiation from the soil, from radon and from some construction materials is also not measured by this indicator.

(**) **Disclaimer:** the results of this Environmental impacts indicator shall be used with care as the uncertainties on these results are high or as there is limited experience with the indicator.

Scenario 100% glass landfill

Table 45 Additional Environmental impacts indicators for 1 m² SlimLine 38 window – LDN, scenario 100% glass landfill

Impact category	Unit	A1-A3	A4	C1	C2	C3	C4	D
Particular Matter emissions	Disease incidence	2.46E-06	2.19E-11	2.19E-09	1.84E-09	1.76E-09	3.26E-08	-6.33E-07
Ionising radiation - human health (*)	[kBq U235 eq.]	4.54E+00	1.38E-06	3.46E-02	1.16E-04	1.63E-02	7.91E-03	-1.24E+00
Eco-toxicity (freshwater) (**)	[CTUe]	1.51E+03	1.26E-02	7.53E-01	1.06E+00	7.01E-01	2.54E+00	-3.38E+01
Human toxicity - cancer effects (**)	[CTUh]	1.92E-08	2.49E-13	2.00E-11	2.09E-11	9.69E-11	3.40E-10	-2.07E-09
Human toxicity - non-cancer effects (**)	[CTUh]	1.58E-06	1.30E-11	8.14E-10	1.10E-09	7.98E-10	3.65E-08	-6.03E-08
Land Use related impacts/ Soil quality (**)	dimensionless	1.11E+02	4.75E-03	5.06E-01	3.99E-01	8.68E-01	9.15E-01	-4.50E+00

(*) **Disclaimer:** This impact category deals mainly with the eventual impact of low dose ionizing radiation on human health of the nuclear fuel cycle. It does not consider effects due to possible nuclear accidents, occupational exposure nor due to radioactive waste disposal in underground facilities. Potential ionizing radiation from the soil, from radon and from some construction materials is also not measured by this indicator.

(**) **Disclaimer:** the results of this Environmental impacts indicator shall be used with care as the uncertainties on these results are high or as there is limited experience with the indicator.

8.2 Result of the LCA – Resource use SlimLine 38 window – LDN, 1 m²

The tables below report the results of the resource use for the two glass scenarios: 100% recycling and 100% landfill.

Scenario 100% glass recycling

Table 46 Resource use for 1 m² SlimLine 38 window – LDN, scenario 100% glass recycling

Parameter	Unit	A1-A3	A4	C1	C2	C3	C4	D
PERE	MJ	1.68E+02	8.79E-04	6.63E-01	1.80E-01	-2.44E-01	1.24E-01	-5.35E+01
PERM	MJ	0.00E+00	0.00E+00	0.00E+00	0.00E+00	0.00E+00	0.00E+00	0.00E+00
PERT	MJ	1.68E+02	8.79E-04	6.63E-01	1.80E-01	-2.44E-01	1.24E-01	-5.35E+01
PENRE	MJ	7.37E+02	1.52E-02	1.61E+00	3.10E+00	1.86E-01	9.73E-01	-2.34E+02
PENRM	MJ	3.29E+01	0.00E+00	0.00E+00	0.00E+00	0.00E+00	0.00E+00	0.00E+00
PENRT	MJ	7.69E+02	1.52E-02	1.61E+00	3.10E+00	1.86E-01	9.73E-01	-2.34E+02
SM	kg	1.57E+00	0.00E+00	0.00E+00	0.00E+00	0.00E+00	0.00E+00	0.00E+00
RSF	MJ	0.00E+00	0.00E+00	0.00E+00	0.00E+00	0.00E+00	0.00E+00	0.00E+00
NRSF	MJ	0.00E+00	0.00E+00	0.00E+00	0.00E+00	0.00E+00	0.00E+00	0.00E+00
FW	m ³	2.85E-01	7.82E-07	6.45E-04	1.60E-04	6.58E-04	4.58E-03	-1.42E-01

Note: PERE – use of renewable primary energy excluding renewable primary energy resources used as raw materials; PERM – use of renewable primary energy resources used as raw materials; PERT – Total use of renewable primary energy resources; PENRE – use of non-renewable primary energy excluding non-renewable primary energy resources used as raw materials; PENRM – use of non-renewable primary energy resources used as raw materials; PENRT – Total use of non-renewable primary energy resources; SM – Use of secondary materials; RSF – Use of renewable secondary fuels; NRSF – use of non-renewable secondary fuels; FW – use of net fresh water.

Scenario 100% glass landfill

Table 47 Resource use for 1 m² SlimLine 38 window – LDN, scenario 100% glass landfill

Parameter	Unit	A1-A3	A4	C1	C2	C3	C4	D
PERE	MJ	1.68E+02	8.79E-04	6.63E-01	7.39E-02	9.48E-01	6.29E-01	-4.61E+01
PERM	MJ	0.00E+00	0.00E+00	0.00E+00	0.00E+00	0.00E+00	0.00E+00	0.00E+00
PERT	MJ	1.68E+02	8.79E-04	6.63E-01	7.39E-02	9.48E-01	6.29E-01	-4.61E+01
PENRE	MJ	7.37E+02	1.52E-02	1.61E+00	1.27E+00	1.76E+00	4.73E+00	-1.06E+02
PENRM	MJ	3.29E+01	0.00E+00	0.00E+00	0.00E+00	0.00E+00	0.00E+00	0.00E+00
PENRT	MJ	7.69E+02	1.52E-02	1.61E+00	1.27E+00	1.76E+00	4.73E+00	-1.06E+02
SM	kg	1.57E+00	0.00E+00	0.00E+00	0.00E+00	0.00E+00	0.00E+00	0.00E+00
RSF	MJ	0.00E+00	0.00E+00	0.00E+00	0.00E+00	0.00E+00	0.00E+00	0.00E+00
NRSF	MJ	0.00E+00	0.00E+00	0.00E+00	0.00E+00	0.00E+00	0.00E+00	0.00E+00
FW	m ³	2.85E-01	7.82E-07	6.45E-04	6.57E-05	5.11E-04	5.51E-03	-1.12E-01

Note: PERE – use of renewable primary energy excluding renewable primary energy resources used as raw materials; PERM – use of renewable primary energy resources used as raw materials; PERT – Total use of renewable primary energy resources; PENRE – use of non-renewable primary energy excluding non-renewable primary energy resources used as raw materials; PENRM – use of non-renewable primary energy resources used as raw materials; PENRT – Total use of non-renewable primary energy resources; SM – Use of secondary materials; RSF – Use of renewable secondary fuels; NRSF – use of non-renewable secondary fuels; FW – use of net fresh water.

8.3 Result of the LCA – Output flows, waste categories

Scenario 100% glass recycling

Table 48 Output flows, waste categories for 1 m² SlimLine 38 window – LDN, scenario 100% glass recycling

Parameter	Unit	A1-A3	A4	C1	C2	C3	C4	D
HWD	kg	3.77E-07	6.33E-13	3.82E-10	1.29E-10	4.57E-10	2.15E-10	-5.60E-08
NHWD	kg	5.59E+00	2.45E-06	1.03E-03	5.00E-04	1.44E-02	3.95E-01	-2.64E+00
RWD	kg	1.80E-02	1.45E-08	2.11E-04	2.97E-06	-2.89E-04	2.61E-05	-8.63E-03
CRU	kg	0.00E+00	0.00E+00	0.00E+00	0.00E+00	0.00E+00	0.00E+00	0.00E+00
MFR	kg	0.00E+00	0.00E+00	0.00E+00	0.00E+00	2.13E+01	0.00E+00	0.00E+00
MER	kg	0.00E+00	0.00E+00	0.00E+00	0.00E+00	0.00E+00	0.00E+00	0.00E+00
EEE	MJ	0.00E+00	0.00E+00	0.00E+00	0.00E+00	0.00E+00	3.14E+00	0.00E+00
EET	MJ	0.00E+00	0.00E+00	0.00E+00	0.00E+00	0.00E+00	5.72E+00	0.00E+00

Note: HWD – hazardous waste disposed; NHWD – Non-hazardous waste disposed; RWD – Radioactive waste disposed; CRU – Components for re-use; MFR – Materials for recycling; MER – Materials for energy recovery; EEE – Exported electrical energy; EET – Exported thermal energy.

Scenario 100% glass landfill

Table 49 Output flows, waste categories for 1 m² SlimLine 38 window – LDN, scenario 100% glass landfill

Parameter	Unit	A1-A3	A4	C1	C2	C3	C4	D
HWD	kg	3.77E-07	6.33E-13	3.82E-10	5.33E-11	1.36E-09	6.14E-10	-5.46E-08
NHWD	kg	5.59E+00	2.45E-06	1.03E-03	2.06E-04	1.82E-03	1.91E+01	-2.19E+00
RWD	kg	1.80E-02	1.45E-08	2.11E-04	1.22E-06	1.65E-04	6.55E-05	-6.63E-03
CRU	kg	0.00E+00	0.00E+00	0.00E+00	0.00E+00	0.00E+00	0.00E+00	0.00E+00
MFR	kg	0.00E+00	0.00E+00	0.00E+00	0.00E+00	3.21E+00	0.00E+00	0.00E+00
MER	kg	0.00E+00	0.00E+00	0.00E+00	0.00E+00	0.00E+00	0.00E+00	0.00E+00
EEE	MJ	0.00E+00	0.00E+00	0.00E+00	0.00E+00	0.00E+00	3.14E+00	0.00E+00
EET	MJ	0.00E+00	0.00E+00	0.00E+00	0.00E+00	0.00E+00	5.72E+00	0.00E+00

Note: HWD – hazardous waste disposed; NHWD – Non-hazardous waste disposed; RWD – Radioactive waste disposed; CRU – Components for re-use; MFR – Materials for recycling; MER – Materials for energy recovery; EEE – Exported electrical energy; EET – Exported thermal energy.

9 LCA RESULTS – SlimLine 38 window – LTN

9.1 Result of the LCA – Environmental impacts

The tables below report the results of the LCA study for the two glass scenarios: 100% recycling and 100% landfill.

9.1.1 Core Environmental impacts indicators

Scenario 100% glass recycling

Table 50 Core Environmental impacts indicators for 1 m² SlimLine 38 window – LTN, *scenario 100% glass recycling*

Impact category	Unit	A1-A3	A4	C1	C2	C3	C4	D
GWP - total	kg CO ₂ eq.	7.66E+01	1.59E-03	1.00E-01	3.22E-01	1.20E+00	1.73E+00	-2.54E+01
GWP – fossil	kg CO ₂ eq.	7.62E+01	1.58E-03	1.00E-01	3.20E-01	9.11E-01	1.73E+00	-2.54E+01
GWP – biogenic	kg CO ₂ eq.	2.68E-01	7.92E-07	-2.02E-04	1.61E-04	2.88E-01	9.68E-05	-3.84E-02
GWP - luluc	kg CO ₂ eq.	5.51E-02	1.02E-05	2.41E-04	2.08E-03	6.17E-03	6.02E-05	-9.37E-03
ODP	kg CFC 11 eq.	1.51E-10	4.08E-19	1.91E-15	8.29E-17	4.08E-16	4.07E-16	-5.56E-11
AP	mol H ⁺ eq.	3.26E-01	8.90E-06	2.63E-04	1.81E-03	1.20E-03	2.24E-03	-1.38E-01
EP - freshwater	kg PO ₄ ³⁻ eq.	1.93E-04	3.28E-09	2.54E-07	6.66E-07	2.25E-06	9.07E-07	-1.74E-05
EP - marine	kg N eq.	1.18E-01	4.39E-06	8.54E-05	8.91E-04	9.78E-04	1.12E-03	-2.57E-02
EP - terrestrial	mol N eq.	1.37E+00	4.85E-05	9.23E-04	9.86E-03	1.13E-02	1.25E-02	-3.56E-01
POCP	kg NMVOC eq.	3.22E-01	8.39E-06	2.36E-04	1.71E-03	1.56E-03	2.87E-03	-6.67E-02
ADP-MM (**)	kg Sb eq.	3.98E-05	1.39E-10	2.51E-08	2.82E-08	2.43E-08	7.88E-09	-2.48E-06
ADPF (**)	MJ	1.04E+03	2.11E-02	1.68E+00	4.29E+00	-6.57E-01	9.71E-01	-2.93E+02
WDP (**)	m ³	6.37E+00	6.19E-06	1.28E-02	1.26E-03	1.16E-01	1.94E-01	-2.78E+00

Note: GWP – Global Warming Potential; ODP – Ozone Depletion; AP – acidification potential for soil and water; EP – Eutrophication potential; POCP – formation potential of tropospheric ozone; ADP - MM – abiotic depletion potential for non fossil resources; ADPF – Abiotic depletion potential for fossil resources; WDP – Water deprivation potential.

(**) **Disclaimer:** the results of this Environmental impacts indicator shall be used with care as the uncertainties on these results are high or as there is limited experience with the indicator.

Scenario 100% glass landfill

Table 51 Core Environmental impacts indicators for 1 m² SlimLine 38 window – LTN, scenario 100% glass landfill

Impact category	Unit	A1-A3	A4	C1	C2	C3	C4	D
GWP - total	kg CO ₂ eq.	7.66E+01	1.59E-03	1.00E-01	1.17E-01	1.35E-01	2.14E+00	-8.04E+00
GWP – fossil	kg CO ₂ eq.	7.62E+01	1.58E-03	1.00E-01	1.16E-01	1.34E-01	2.15E+00	-8.02E+00
GWP – biogenic	kg CO ₂ eq.	2.68E-01	7.92E-07	-2.02E-04	5.84E-05	8.31E-04	-1.22E-02	-1.91E-02
GWP - luluc	kg CO ₂ eq.	5.51E-02	1.02E-05	2.41E-04	7.55E-04	3.26E-04	1.31E-03	-1.37E-03
ODP	kg CFC 11 eq.	1.51E-10	4.08E-19	1.91E-15	3.01E-17	4.21E-15	2.06E-15	-5.55E-11
AP	mol H ⁺ eq.	3.26E-01	8.90E-06	2.63E-04	6.56E-04	2.30E-04	5.26E-03	-4.32E-02
EP - freshwater	kg PO ₄ ³⁻ eq.	1.93E-04	3.28E-09	2.54E-07	2.42E-07	5.66E-07	1.62E-06	-4.07E-06
EP - marine	kg N eq.	1.18E-01	4.39E-06	8.54E-05	3.23E-04	6.44E-05	1.91E-03	-6.04E-03
EP - terrestrial	mol N eq.	1.37E+00	4.85E-05	9.23E-04	3.58E-03	6.72E-04	2.11E-02	-6.59E-02
POCP	kg NMVOC eq.	3.22E-01	8.39E-06	2.36E-04	6.19E-04	1.62E-04	5.25E-03	-1.84E-02
ADP-MM (**)	kg Sb eq.	3.98E-05	1.39E-10	2.51E-08	1.02E-08	5.08E-08	4.79E-08	-1.78E-06
ADPF (**)	MJ	1.04E+03	2.11E-02	1.68E+00	1.56E+00	1.69E+00	6.60E+00	-1.02E+02
WDP (**)	m ³	6.37E+00	6.19E-06	1.28E-02	4.57E-04	3.00E-03	2.39E-01	-1.14E+00

Note: GWP – Global Warming Potential; ODP – Ozone Depletion; AP – acidification potential for soil and water; EP – Eutrophication potential; POCP – formation potential of tropospheric ozone; ADP - MM – abiotic depletion potential for non fossil resources; ADPF – Abiotic depletion potential for fossil resources; WDP – Water deprivation potential.

(**) **Disclaimer:** the results of this Environmental impacts indicator shall be used with care as the uncertainties on these results are high or as there is limited experience with the indicator.

9.1.2 Additional Environmental impacts indicators

Scenario 100% glass recycling

Table 52 Additional Environmental impacts indicators for 1 m² SlimLine 38 window – LTN, scenario 100% glass recycling

Impact category	Unit	A1-A3	A4	C1	C2	C3	C4	D
Particular Matter emissions	Disease incidence	2.88E-06	3.05E-11	2.51E-09	6.20E-09	-3.67E-09	7.50E-09	-1.69E-06
Ionising radiation - human health (*)	[kBq U235 eq.]	4.24E+00	1.93E-06	3.46E-02	3.92E-04	-1.12E-01	3.77E-03	-1.66E+00
Eco-toxicity (freshwater) (**)	[CTUe]	2.35E+03	1.75E-02	8.15E-01	3.57E+00	5.75E+00	3.96E-01	-1.55E+03
Human toxicity - cancer effects (**)	[CTUh]	2.09E-08	3.47E-13	2.12E-11	7.05E-11	-2.08E-10	2.44E-11	-4.79E-09
Human toxicity - non-cancer effects (**)	[CTUh]	1.84E-06	1.82E-11	8.84E-10	3.69E-09	4.74E-09	1.66E-09	-3.81E-07
Land Use related impacts/ Soil quality (**)	dimensionless	1.33E+02	6.62E-03	5.29E-01	1.34E+00	3.27E+00	1.57E-01	-1.57E+01

(*) **Disclaimer:** This impact category deals mainly with the eventual impact of low dose ionizing radiation on human health of the nuclear fuel cycle. It does not consider effects due to possible nuclear accidents, occupational exposure nor due to radioactive waste disposal in underground facilities. Potential ionizing radiation from the soil, from radon and from some construction materials is also not measured by this indicator.

(**) **Disclaimer:** the results of this Environmental impacts indicator shall be used with care as the uncertainties on these results are high or as there is limited experience with the indicator.

Scenario 100% glass landfill

Table 53 Additional Environmental impacts indicators for 1 m² SlimLine 38 window – LTN, scenario 100% glass landfill

Impact category	Unit	A1-A3	A4	C1	C2	C3	C4	D
Particular Matter emissions	Disease incidence	2.88E-06	3.05E-11	2.51E-09	2.25E-09	1.69E-09	4.51E-08	-6.03E-07
Ionising radiation - human health (*)	[kBq U235 eq.]	4.24E+00	1.93E-06	3.46E-02	1.42E-04	1.57E-02	9.97E-03	-1.19E+00
Eco-toxicity (freshwater) (**)	[CTUe]	2.35E+03	1.75E-02	8.15E-01	1.29E+00	6.76E-01	3.61E+00	-3.23E+01
Human toxicity - cancer effects (**)	[CTUh]	2.09E-08	3.47E-13	2.12E-11	2.56E-11	9.34E-11	4.98E-10	-1.97E-09
Human toxicity - non-cancer effects (**)	[CTUh]	1.84E-06	1.82E-11	8.84E-10	1.34E-09	7.70E-10	5.39E-08	-5.77E-08
Land Use related impacts/ Soil quality (**)	dimensionless	1.33E+02	6.62E-03	5.29E-01	4.88E-01	8.37E-01	1.29E+00	-4.37E+00

(*) **Disclaimer:** This impact category deals mainly with the eventual impact of low dose ionizing radiation on human health of the nuclear fuel cycle. It does not consider effects due to possible nuclear accidents, occupational exposure nor due to radioactive waste disposal in underground facilities. Potential ionizing radiation from the soil, from radon and from some construction materials is also not measured by this indicator.

(**) **Disclaimer:** the results of this Environmental impacts indicator shall be used with care as the uncertainties on these results are high or as there is limited experience with the indicator.

9.2 Result of the LCA – Resource use window system SlimLine 38 window – LTN, 1 m²
 The tables below report the results of the resource use for the two glass scenarios: 100% recycling and 100% landfill.

Scenario 100% glass recycling

Table 54 Resource use for 1 m² SlimLine 38 window – LTN, scenario 100% glass recycling

Parameter	Unit	A1-A3	A4	C1	C2	C3	C4	D
PERE	MJ	1.82E+02	1.23E-03	6.67E-01	2.49E-01	-8.74E-01	1.24E-01	-5.51E+01
PERM	MJ	0.00E+00	0.00E+00	0.00E+00	0.00E+00	0.00E+00	0.00E+00	0.00E+00
PERT	MJ	1.82E+02	1.23E-03	6.67E-01	2.49E-01	-8.74E-01	1.24E-01	-5.51E+01
PENRE	MJ	9.60E+02	2.11E-02	1.68E+00	4.29E+00	-6.62E-01	9.71E-01	-2.93E+02
PENRM	MJ	3.29E+01	0.00E+00	0.00E+00	0.00E+00	0.00E+00	0.00E+00	0.00E+00
PENRT	MJ	9.93E+02	2.11E-02	1.68E+00	4.29E+00	-6.62E-01	9.71E-01	-2.93E+02
SM	kg	1.50E+00	0.00E+00	0.00E+00	0.00E+00	0.00E+00	0.00E+00	0.00E+00
RSF	MJ	0.00E+00	0.00E+00	0.00E+00	0.00E+00	0.00E+00	0.00E+00	0.00E+00
NRSF	MJ	0.00E+00	0.00E+00	0.00E+00	0.00E+00	0.00E+00	0.00E+00	0.00E+00
FW	m ³	3.20E-01	1.09E-06	6.48E-04	2.21E-04	7.13E-04	4.58E-03	-1.51E-01

Note: PERE – use of renewable primary energy excluding renewable primary energy resources used as raw materials; PERM – use of renewable primary energy resources used as raw materials; PERT – Total use of renewable primary energy resources; PENRE – use of non-renewable primary energy excluding non-renewable primary energy resources used as raw materials; PENRM – use of non-renewable primary energy resources used as raw materials; PENRT – Total use of non-renewable primary energy resources; SM – Use of secondary materials; RSF – Use of renewable secondary fuels; NRSF – use of non-renewable secondary fuels; FW – use of net fresh water.

Scenario 100% glass landfill

Table 55 Resource use for 1 m² SlimLine 38 window – LTN, scenario 100% glass landfill

Parameter	Unit	A1-A3	A4	C1	C2	C3	C4	D
PERE	MJ	1.82E+02	1.23E-03	6.67E-01	9.04E-02	9.15E-01	8.82E-01	-4.41E+01
PERM	MJ	0.00E+00	0.00E+00	0.00E+00	0.00E+00	0.00E+00	0.00E+00	0.00E+00
PERT	MJ	1.82E+02	1.23E-03	6.67E-01	9.04E-02	9.15E-01	8.82E-01	-4.41E+01
PENRE	MJ	9.60E+02	2.11E-02	1.68E+00	1.56E+00	1.69E+00	6.61E+00	-1.02E+02
PENRM	MJ	3.29E+01	0.00E+00	0.00E+00	0.00E+00	0.00E+00	0.00E+00	0.00E+00
PENRT	MJ	9.93E+02	2.11E-02	1.68E+00	1.56E+00	1.69E+00	6.61E+00	-1.02E+02
SM	kg	1.50E+00	0.00E+00	0.00E+00	0.00E+00	0.00E+00	0.00E+00	0.00E+00
RSF	MJ	0.00E+00	0.00E+00	0.00E+00	0.00E+00	0.00E+00	0.00E+00	0.00E+00
NRSF	MJ	0.00E+00	0.00E+00	0.00E+00	0.00E+00	0.00E+00	0.00E+00	0.00E+00
FW	m ³	3.20E-01	1.09E-06	6.48E-04	8.03E-05	4.93E-04	5.97E-03	-1.07E-01

Note: PERE – use of renewable primary energy excluding renewable primary energy resources used as raw materials; PERM – use of renewable primary energy resources used as raw materials; PERT – Total use of renewable primary energy resources; PENRE – use of non-renewable primary energy excluding non-renewable primary energy resources used as raw materials; PENRM – use of non-renewable primary energy resources used as raw materials; PENRT – Total use of non-renewable primary energy resources; SM – Use of secondary materials; RSF – Use of renewable secondary fuels; NRSF – use of non-renewable secondary fuels; FW – use of net fresh water.

9.3 Result of the LCA – Output flows, waste categories

Scenario 100% glass recycling

Table 56 Output flows, waste categories for 1 m² SlimLine 38 window – LTN, scenario 100% glass recycling

Parameter	Unit	A1-A3	A4	C1	C2	C3	C4	D
HWD	kg	4.28E-07	8.83E-13	3.85E-10	1.79E-10	-4.63E-11	2.15E-10	-5.43E-08
NHWD	kg	6.48E+00	3.41E-06	1.05E-03	6.93E-04	2.06E-02	3.85E-01	-2.75E+00
RWD	kg	1.82E-02	2.03E-08	2.11E-04	4.12E-06	-5.22E-04	2.61E-05	-9.35E-03
CRU	kg	0.00E+00	0.00E+00	0.00E+00	0.00E+00	0.00E+00	0.00E+00	0.00E+00
MFR	kg	0.00E+00	0.00E+00	0.00E+00	0.00E+00	3.02E+01	0.00E+00	0.00E+00
MER	kg	0.00E+00	0.00E+00	0.00E+00	0.00E+00	0.00E+00	0.00E+00	0.00E+00
EEE	MJ	0.00E+00	0.00E+00	0.00E+00	0.00E+00	0.00E+00	3.14E+00	0.00E+00
EET	MJ	0.00E+00	0.00E+00	0.00E+00	0.00E+00	0.00E+00	5.72E+00	0.00E+00

Note: HWD – hazardous waste disposed; NHWD – Non-hazardous waste disposed; RWD – Radioactive waste disposed; CRU – Components for re-use; MFR – Materials for recycling; MER – Materials for energy recovery; EEE – Exported electrical energy; EET – Exported thermal energy.

Scenario 100% glass landfill

Table 57 Output flows, waste categories for 1 m² SlimLine 38 window – LTN, scenario 100% glass landfill

Parameter	Unit	A1-A3	A4	C1	C2	C3	C4	D
HWD	kg	4.28E-07	8.83E-13	3.85E-10	6.51E-11	1.32E-09	8.13E-10	-5.21E-08
NHWD	kg	6.48E+00	3.41E-06	1.05E-03	2.51E-04	1.75E-03	2.85E+01	-2.09E+00
RWD	kg	1.82E-02	2.03E-08	2.11E-04	1.49E-06	1.59E-04	8.51E-05	-6.36E-03
CRU	kg	0.00E+00	0.00E+00	0.00E+00	0.00E+00	0.00E+00	0.00E+00	0.00E+00
MFR	kg	0.00E+00	0.00E+00	0.00E+00	0.00E+00	3.06E+00	0.00E+00	0.00E+00
MER	kg	0.00E+00	0.00E+00	0.00E+00	0.00E+00	0.00E+00	0.00E+00	0.00E+00
EEE	MJ	0.00E+00	0.00E+00	0.00E+00	0.00E+00	0.00E+00	3.14E+00	0.00E+00
EET	MJ	0.00E+00	0.00E+00	0.00E+00	0.00E+00	0.00E+00	5.72E+00	0.00E+00

Note: HWD – hazardous waste disposed; NHWD – Non-hazardous waste disposed; RWD – Radioactive waste disposed; CRU – Components for re-use; MFR – Materials for recycling; MER – Materials for energy recovery; EEE – Exported electrical energy; EET – Exported thermal energy.

10 LCA RESULTS – SlimLine 38 window – SDN

10.1 Result of the LCA – Environmental impacts

The tables below report the results of the LCA study for the two glass scenarios: 100% recycling and 100% landfill.

10.1.1 Core Environmental impacts indicators

Scenario 100% glass recycling

Table 26 Core Environmental impacts indicators for 1 m² SlimLine 38 window – SDN, scenario 100% glass recycling

Impact category	Unit	A1-A3	A4	C1	C2	C3	C4	D
GWP - total	kg CO ₂ eq.	6.67E+01	1.19E-03	9.54E-02	2.45E-01	8.85E-01	2.30E+00	-2.24E+01
GWP – fossil	kg CO ₂ eq.	6.65E+01	1.19E-03	9.51E-02	2.44E-01	6.92E-01	2.30E+00	-2.23E+01
GWP – biogenic	kg CO ₂ eq.	1.65E-01	5.96E-07	1.53E-05	1.23E-04	1.89E-01	1.23E-04	-3.88E-02
GWP - luluc	kg CO ₂ eq.	4.15E-02	7.70E-06	2.09E-04	1.58E-03	4.27E-03	8.15E-05	-7.09E-03
ODP	kg CFC 11 eq.	2.08E-10	3.07E-19	1.91E-15	6.31E-17	3.31E-15	5.50E-16	-7.65E-11
AP	mol H ⁺ eq.	3.03E-01	6.70E-06	2.39E-04	1.38E-03	9.53E-04	2.94E-03	-1.22E-01
EP - freshwater	kg PO ₄ ³⁻ eq.	2.22E-04	2.47E-09	2.44E-07	5.07E-07	1.88E-06	1.20E-06	-1.43E-05
EP - marine	kg N eq.	8.80E-02	3.30E-06	7.40E-05	6.78E-04	6.86E-04	1.47E-03	-2.12E-02
EP - terrestrial	mol N eq.	9.96E-01	3.65E-05	7.96E-04	7.51E-03	7.85E-03	1.64E-02	-2.80E-01
POCP	kg NMVOC eq.	2.35E-01	6.31E-06	2.04E-04	1.30E-03	1.14E-03	3.77E-03	-5.68E-02
ADP-MM (**)	kg Sb eq.	3.71E-05	1.04E-10	2.47E-08	2.14E-08	5.27E-08	1.06E-08	-2.90E-06
ADPF (**)	MJ	9.60E+02	1.59E-02	1.61E+00	3.27E+00	7.97E-01	1.29E+00	-2.64E+02
WDP (**)	m ³	1.14E+01	4.66E-06	1.28E-02	9.58E-04	7.78E-02	2.57E-01	-2.64E+00

Note: GWP – Global Warming Potential; ODP – Ozone Depletion; AP – acidification potential for soil and water; EP – Eutrophication potential; POCP – formation potential of tropospheric ozone; ADP - MM – abiotic depletion potential for non fossil resources; ADPF – Abiotic depletion potential for fossil resources; WDP – Water deprivation potential.

(**) **Disclaimer:** the results of this Environmental impacts indicator shall be used with care as the uncertainties on these results are high or as there is limited experience with the indicator.

Scenario 100% glass landfill

Table 27 Core Environmental impacts indicators for 1 m² SlimLine 38 window – SDN, scenario 100% glass landfill

Impact category	Unit	A1-A3	A4	C1	C2	C3	C4	D
GWP - total	kg CO ₂ eq.	6.67E+01	1.19E-03	9.54E-02	1.11E-01	1.86E-01	2.57E+00	-1.10E+01
GWP – fossil	kg CO ₂ eq.	6.65E+01	1.19E-03	9.51E-02	1.10E-01	1.84E-01	2.57E+00	-1.10E+01
GWP – biogenic	kg CO ₂ eq.	1.65E-01	5.96E-07	1.53E-05	5.55E-05	1.15E-03	-7.94E-03	-2.62E-02
GWP - luluc	kg CO ₂ eq.	4.15E-02	7.70E-06	2.09E-04	7.17E-04	4.49E-04	8.97E-04	-1.86E-03
ODP	kg CFC 11 eq.	2.08E-10	3.07E-19	1.91E-15	2.86E-17	5.80E-15	1.63E-15	-7.64E-11
AP	mol H ⁺ eq.	3.03E-01	6.70E-06	2.39E-04	6.24E-04	3.16E-04	4.92E-03	-5.94E-02
EP - freshwater	kg PO ₄ ³⁻ eq.	2.22E-04	2.47E-09	2.44E-07	2.30E-07	7.80E-07	1.67E-06	-5.55E-06
EP - marine	kg N eq.	8.80E-02	3.30E-06	7.40E-05	3.07E-04	8.87E-05	1.99E-03	-8.30E-03
EP - terrestrial	mol N eq.	9.96E-01	3.65E-05	7.96E-04	3.40E-03	9.26E-04	2.21E-02	-9.05E-02
POCP	kg NMVOC eq.	2.35E-01	6.31E-06	2.04E-04	5.88E-04	2.23E-04	5.32E-03	-2.52E-02
ADP-MM (**)	kg Sb eq.	3.71E-05	1.04E-10	2.47E-08	9.71E-09	7.00E-08	3.68E-08	-2.44E-06
ADPF (**)	MJ	9.60E+02	1.59E-02	1.61E+00	1.48E+00	2.33E+00	4.97E+00	-1.40E+02
WDP (**)	m ³	1.14E+01	4.66E-06	1.28E-02	4.34E-04	4.14E-03	2.86E-01	-1.56E+00

Note: GWP – Global Warming Potential; ODP – Ozone Depletion; AP – acidification potential for soil and water; EP – Eutrophication potential; POCP – formation potential of tropospheric ozone; ADP - MM – abiotic depletion potential for non fossil resources; ADPF – Abiotic depletion potential for fossil resources; WDP – Water deprivation potential.

(**) **Disclaimer:** the results of this Environmental impacts indicator shall be used with care as the uncertainties on these results are high or as there is limited experience with the indicator.

10.1.2 Additional Environmental impacts indicators

Scenario 100% glass recycling

Table 28 Additional Environmental impacts indicators for 1 m² SlimLine 38 window – SDN, scenario 100% glass recycling

Impact category	Unit	A1-A3	A4	C1	C2	C3	C4	D
Particular Matter emissions	Disease incidence	2.87E-06	2.30E-11	2.23E-09	4.72E-09	-1.17E-09	9.93E-09	-1.54E-06
Ionising radiation - human health (*)	[kBq U235 eq.]	5.86E+00	1.45E-06	3.46E-02	2.98E-04	-6.19E-02	4.98E-03	-1.94E+00
Eco-toxicity (freshwater) (**)	[CTUe]	1.60E+03	1.32E-02	7.61E-01	2.71E+00	4.25E+00	5.27E-01	-1.04E+03
Human toxicity - cancer effects (**)	[CTUh]	2.43E-08	2.61E-13	2.01E-11	5.37E-11	-6.85E-11	3.28E-11	-4.55E-09
Human toxicity - non-cancer effects (**)	[CTUh]	1.94E-06	1.37E-11	8.22E-10	2.81E-09	3.65E-09	2.25E-09	-2.91E-07
Land Use related impacts/ Soil quality (**)	dimensionless	1.35E+02	4.98E-03	5.09E-01	1.02E+00	2.74E+00	2.10E-01	-1.33E+01

(*) **Disclaimer:** This impact category deals mainly with the eventual impact of low dose ionizing radiation on human health of the nuclear fuel cycle. It does not consider effects due to possible nuclear accidents, occupational exposure nor due to radioactive waste disposal in underground facilities. Potential ionizing radiation from the soil, from radon and from some construction materials is also not measured by this indicator.

(**) **Disclaimer:** the results of this Environmental impacts indicator shall be used with care as the uncertainties on these results are high or as there is limited experience with the indicator.

Scenario 100% glass landfill

Table 29 Additional Environmental impacts indicators for 1 m² SlimLine 38 window – SDN, scenario 100% glass landfill

Impact category	Unit	A1-A3	A4	C1	C2	C3	C4	D
Particular Matter emissions	Disease incidence	2.87E-06	2.30E-11	2.23E-09	2.14E-09	2.33E-09	3.45E-08	-8.29E-07
Ionising radiation - human health (*)	[kBq U235 eq.]	5.86E+00	1.45E-06	3.46E-02	1.35E-04	2.16E-02	9.04E-03	-1.64E+00
Eco-toxicity (freshwater) (**)	[CTUe]	1.60E+03	1.32E-02	7.61E-01	1.23E+00	9.31E-01	2.62E+00	-4.43E+01
Human toxicity - cancer effects (**)	[CTUh]	2.43E-08	2.61E-13	2.01E-11	2.43E-11	1.29E-10	3.42E-10	-2.71E-09
Human toxicity - non-cancer effects (**)	[CTUh]	1.94E-06	1.37E-11	8.22E-10	1.27E-09	1.06E-09	3.64E-08	-7.92E-08
Land Use related impacts/ Soil quality (**)	dimensionless	1.35E+02	4.98E-03	5.09E-01	4.64E-01	1.15E+00	9.53E-01	-5.92E+00

(*) **Disclaimer:** This impact category deals mainly with the eventual impact of low dose ionizing radiation on human health of the nuclear fuel cycle. It does not consider effects due to possible nuclear accidents, occupational exposure nor due to radioactive waste disposal in underground facilities. Potential ionizing radiation from the soil, from radon and from some construction materials is also not measured by this indicator.

(**) **Disclaimer:** the results of this Environmental impacts indicator shall be used with care as the uncertainties on these results are high or as there is limited experience with the indicator.

10.2 Result of the LCA – Resource use SlimLine 38 window – SDN, 1 m²

The tables below report the results of the resource use for the two glass scenarios: 100% recycling and 100% landfill.

Scenario 100% glass recycling

Table 30 Resource use for 1 m² SlimLine 38 window – SDN, scenario 100% glass recycling

Parameter	Unit	A1-A3	A4	C1	C2	C3	C4	D
PERE	MJ	2.10E+02	9.22E-04	6.63E-01	1.90E-01	9.17E-02	1.66E-01	-6.77E+01
PERM	MJ	0.00E+00	0.00E+00	0.00E+00	0.00E+00	0.00E+00	0.00E+00	0.00E+00
PERT	MJ	2.10E+02	9.22E-04	6.63E-01	1.90E-01	9.17E-02	1.66E-01	-6.77E+01
PENRE	MJ	8.46E+02	1.59E-02	1.61E+00	3.27E+00	7.94E-01	1.29E+00	-2.65E+02
PENRM	MJ	4.31E+01	0.00E+00	0.00E+00	0.00E+00	0.00E+00	0.00E+00	0.00E+00
PENRT	MJ	8.89E+02	1.59E-02	1.61E+00	3.27E+00	7.94E-01	1.29E+00	-2.65E+02
SM	kg	2.13E+00	0.00E+00	0.00E+00	0.00E+00	0.00E+00	0.00E+00	0.00E+00
RSF	MJ	0.00E+00	0.00E+00	0.00E+00	0.00E+00	0.00E+00	0.00E+00	0.00E+00
NRSF	MJ	0.00E+00	0.00E+00	0.00E+00	0.00E+00	0.00E+00	0.00E+00	0.00E+00
FW	m ³	3.54E-01	8.20E-07	6.45E-04	1.69E-04	8.23E-04	6.07E-03	-1.76E-01

Note: PERE – use of renewable primary energy excluding renewable primary energy resources used as raw materials; PERM – use of renewable primary energy resources used as raw materials; PERT – Total use of renewable primary energy resources; PENRE – use of non-renewable primary energy excluding non-renewable primary energy resources used as raw materials; PENRM – use of non-renewable primary energy resources used as raw materials; PENRT – Total use of non-renewable primary energy resources; SM – Use of secondary materials; RSF – Use of renewable secondary fuels; NRSF – use of non-renewable secondary fuels; FW – use of net fresh water.

Scenario 100% glass landfill

Table 31 Resource use for 1 m² SlimLine 38 window – SDN, scenario 100% glass landfill

Parameter	Unit	A1-A3	A4	C1	C2	C3	C4	D
PERE	MJ	2.10E+02	9.22E-04	6.63E-01	8.59E-02	1.26E+00	6.62E-01	-6.05E+01
PERM	MJ	0.00E+00	0.00E+00	0.00E+00	0.00E+00	0.00E+00	0.00E+00	0.00E+00
PERT	MJ	2.10E+02	9.22E-04	6.63E-01	8.59E-02	1.26E+00	6.62E-01	-6.05E+01
PENRE	MJ	8.46E+02	1.59E-02	1.61E+00	1.48E+00	2.33E+00	4.97E+00	-1.40E+02
PENRM	MJ	4.31E+01	0.00E+00	0.00E+00	0.00E+00	0.00E+00	0.00E+00	0.00E+00
PENRT	MJ	8.89E+02	1.59E-02	1.61E+00	1.48E+00	2.33E+00	4.97E+00	-1.40E+02
SM	kg	2.13E+00	0.00E+00	0.00E+00	0.00E+00	0.00E+00	0.00E+00	0.00E+00
RSF	MJ	0.00E+00	0.00E+00	0.00E+00	0.00E+00	0.00E+00	0.00E+00	0.00E+00
NRSF	MJ	0.00E+00	0.00E+00	0.00E+00	0.00E+00	0.00E+00	0.00E+00	0.00E+00
FW	m ³	3.54E-01	8.20E-07	6.45E-04	7.64E-05	6.79E-04	6.98E-03	-1.47E-01

Note: PERE – use of renewable primary energy excluding renewable primary energy resources used as raw materials; PERM – use of renewable primary energy resources used as raw materials; PERT – Total use of renewable primary energy resources; PENRE – use of non-renewable primary energy excluding non-renewable primary energy resources used as raw materials; PENRM – use of non-renewable primary energy resources used as raw materials; PENRT – Total use of non-renewable primary energy resources; SM – Use of secondary materials; RSF – Use of renewable secondary fuels; NRSF – use of non-renewable secondary fuels; FW – use of net fresh water.

10.3 Result of the LCA – Output flows, waste categories

Scenario 100% glass recycling

Table 32 Output flows, waste categories for 1 m² SlimLine 38 window – SDN, scenario 100% glass recycling

Parameter	Unit	A1-A3	A4	C1	C2	C3	C4	D
HWD	kg	4.70E-07	6.64E-13	3.82E-10	1.37E-10	9.23E-10	2.85E-10	-7.30E-08
NHWD	kg	6.71E+00	2.57E-06	1.04E-03	5.27E-04	1.47E-02	5.25E-01	-3.31E+00
RWD	kg	2.26E-02	1.53E-08	2.11E-04	3.14E-06	-2.25E-04	3.47E-05	-1.07E-02
CRU	kg	0.00E+00	0.00E+00	0.00E+00	0.00E+00	0.00E+00	0.00E+00	0.00E+00
MFR	kg	0.00E+00	0.00E+00	0.00E+00	0.00E+00	2.20E+01	0.00E+00	0.00E+00
MER	kg	0.00E+00	0.00E+00	0.00E+00	0.00E+00	0.00E+00	0.00E+00	0.00E+00
EEE	MJ	0.00E+00	0.00E+00	0.00E+00	0.00E+00	0.00E+00	4.17E+00	0.00E+00
EET	MJ	0.00E+00	0.00E+00	0.00E+00	0.00E+00	0.00E+00	7.62E+00	0.00E+00

Note: HWD – hazardous waste disposed; NHWD – Non-hazardous waste disposed; RWD – Radioactive waste disposed; CRU – Components for re-use; MFR – Materials for recycling; MER – Materials for energy recovery; EEE – Exported electrical energy; EET – Exported thermal energy.

Scenario 100% glass landfill

Table 33 Output flows, waste categories for 1 m² SlimLine 38 window – SDN, scenario 100% glass landfill

Parameter	Unit	A1-A3	A4	C1	C2	C3	C4	D
HWD	kg	4.70E-07	6.64E-13	3.82E-10	6.19E-11	1.81E-09	6.76E-10	-7.15E-08
NHWD	kg	6.71E+00	2.57E-06	1.04E-03	2.39E-04	2.41E-03	1.89E+01	-2.87E+00
RWD	kg	2.26E-02	1.53E-08	2.11E-04	1.42E-06	2.20E-04	7.33E-05	-8.72E-03
CRU	kg	0.00E+00	0.00E+00	0.00E+00	0.00E+00	0.00E+00	0.00E+00	0.00E+00
MFR	kg	0.00E+00	0.00E+00	0.00E+00	0.00E+00	4.27E+00	0.00E+00	0.00E+00
MER	kg	0.00E+00	0.00E+00	0.00E+00	0.00E+00	0.00E+00	0.00E+00	0.00E+00
EEE	MJ	0.00E+00	0.00E+00	0.00E+00	0.00E+00	0.00E+00	4.17E+00	0.00E+00
EET	MJ	0.00E+00	0.00E+00	0.00E+00	0.00E+00	0.00E+00	7.62E+00	0.00E+00

Note: HWD – hazardous waste disposed; NHWD – Non-hazardous waste disposed; RWD – Radioactive waste disposed; CRU – Components for re-use; MFR – Materials for recycling; MER – Materials for energy recovery; EEE – Exported electrical energy; EET – Exported thermal energy.

11 LCA RESULTS – WINDOW SYSTEM SlimLine 38 window – STN

11.1 Result of the LCA – Environmental impacts

The tables below report the results of the LCA study for the two glass scenarios: 100% recycling and 100% landfill.

11.1.1 Core Environmental impacts indicators

Scenario 100% glass recycling

Table 66 Core Environmental impacts indicators for 1 m² SlimLine 38 window – STN, scenario 100% glass recycling

Impact category	Unit	A1-A3	A4	C1	C2	C3	C4	D
GWP - total	kg CO2 eq.	8.43E+01	1.63E-03	1.01E-01	3.33E-01	1.23E+00	2.30E+00	-2.76E+01
GWP – fossil	kg CO2 eq.	8.39E+01	1.62E-03	1.01E-01	3.31E-01	9.39E-01	2.29E+00	-2.75E+01
GWP – biogenic	kg CO2 eq.	2.74E-01	8.14E-07	-2.26E-04	1.66E-04	2.82E-01	1.28E-04	-4.40E-02
GWP - luluc	kg CO2 eq.	5.88E-02	1.05E-05	2.45E-04	2.15E-03	6.16E-03	8.10E-05	-9.65E-03
ODP	kg CFC 11 eq.	1.98E-10	4.19E-19	1.91E-15	8.56E-17	1.87E-15	5.50E-16	-7.28E-11
AP	mol H+ eq.	3.54E-01	9.15E-06	2.65E-04	1.87E-03	1.26E-03	2.94E-03	-1.50E-01
EP - freshwater	kg PO43- eq.	2.36E-04	3.37E-09	2.56E-07	6.88E-07	2.40E-06	1.20E-06	-1.84E-05
EP - marine	kg N eq.	1.22E-01	4.51E-06	8.67E-05	9.20E-04	9.81E-04	1.47E-03	-2.72E-02
EP - terrestrial	mol N eq.	1.41E+00	4.99E-05	9.37E-04	1.02E-02	1.13E-02	1.64E-02	-3.71E-01
POCP	kg NMVOC eq.	3.36E-01	8.63E-06	2.40E-04	1.76E-03	1.59E-03	3.77E-03	-7.15E-02
ADP-MM (**)	kg Sb eq.	4.65E-05	1.42E-10	2.52E-08	2.91E-08	4.16E-08	1.06E-08	-3.03E-06
ADPF (**)	MJ	1.17E+03	2.17E-02	1.69E+00	4.43E+00	-5.20E-02	1.29E+00	-3.21E+02
WDP (**)	m3	9.27E+00	6.37E-06	1.28E-02	1.30E-03	1.14E-01	2.57E-01	-3.11E+00

Note: GWP – Global Warming Potential; ODP – Ozone Depletion; AP – acidification potential for soil and water; EP – Eutrophication potential; POCP – formation potential of tropospheric ozone; ADP - MM – abiotic depletion potential for non fossil resources; ADPF – Abiotic depletion potential for fossil resources; WDP – Water deprivation potential.

(**) **Disclaimer:** the results of this Environmental impacts indicator shall be used with care as the uncertainties on these results are high or as there is limited experience with the indicator.

Scenario 100% glass landfill

Table 67 Core Environmental impacts indicators for 1 m² SlimLine 38 window – STN, scenario 100% glass landfill

Impact category	Unit	A1-A3	A4	C1	C2	C3	C4	D
GWP - total	kg CO2 eq.	8.43E+01	1.63E-03	1.01E-01	1.32E-01	1.80E-01	2.70E+00	-1.06E+01
GWP – fossil	kg CO2 eq.	8.39E+01	1.62E-03	1.01E-01	1.31E-01	1.78E-01	2.71E+00	-1.05E+01
GWP – biogenic	kg CO2 eq.	2.74E-01	8.14E-07	-2.26E-04	6.57E-05	1.11E-03	-1.20E-02	-2.52E-02
GWP - luluc	kg CO2 eq.	5.88E-02	1.05E-05	2.45E-04	8.49E-04	4.34E-04	1.30E-03	-1.80E-03
ODP	kg CFC 11 eq.	1.98E-10	4.19E-19	1.91E-15	3.38E-17	5.59E-15	2.17E-15	-7.28E-11
AP	mol H+ eq.	3.54E-01	9.15E-06	2.65E-04	7.38E-04	3.05E-04	5.91E-03	-5.66E-02
EP - freshwater	kg PO43- eq.	2.36E-04	3.37E-09	2.56E-07	2.72E-07	7.53E-07	1.90E-06	-5.35E-06
EP - marine	kg N eq.	1.22E-01	4.51E-06	8.67E-05	3.64E-04	8.56E-05	2.24E-03	-7.92E-03
EP - terrestrial	mol N eq.	1.41E+00	4.99E-05	9.37E-04	4.02E-03	8.94E-04	2.49E-02	-8.64E-02
POCP	kg NMVOC eq.	3.36E-01	8.63E-06	2.40E-04	6.96E-04	2.16E-04	6.10E-03	-2.41E-02
ADP-MM (**)	kg Sb eq.	4.65E-05	1.42E-10	2.52E-08	1.15E-08	6.76E-08	4.98E-08	-2.33E-06
ADPF (**)	MJ	1.17E+03	2.17E-02	1.69E+00	1.75E+00	2.25E+00	6.81E+00	-1.34E+02
WDP (**)	m3	9.27E+00	6.37E-06	1.28E-02	5.14E-04	4.00E-03	3.01E-01	-1.49E+00

Note: GWP – Global Warming Potential; ODP – Ozone Depletion; AP – acidification potential for soil and water; EP – Eutrophication potential; POCP – formation potential of tropospheric ozone; ADP - MM – abiotic depletion potential for non fossil resources; ADPF – Abiotic depletion potential for fossil resources; WDP – Water deprivation potential.

(**) **Disclaimer:** the results of this Environmental impacts indicator shall be used with care as the uncertainties on these results are high or as there is limited experience with the indicator.

11.1.2 Additional Environmental impacts indicators

Scenario 100% glass recycling

Table 68 Additional Environmental impacts indicators for 1 m² SlimLine 38 window – STN, scenario 100% glass recycling

Impact category	Unit	A1-A3	A4	C1	C2	C3	C4	D
Particular Matter emissions	Disease incidence	3.26E-06	3.14E-11	2.54E-09	6.40E-09	-3.01E-09	9.91E-09	-1.85E-06
Ionising radiation - human health (*)	[kBq U235 eq.]	5.50E+00	1.98E-06	3.46E-02	4.05E-04	-1.04E-01	4.98E-03	-2.02E+00
Eco-toxicity (freshwater) (**)	[CTUe]	2.42E+03	1.80E-02	8.21E-01	3.68E+00	5.88E+00	5.25E-01	-1.53E+03
Human toxicity - cancer effects (**)	[CTUh]	2.59E-08	3.57E-13	2.13E-11	7.28E-11	-1.72E-10	3.26E-11	-5.35E-09
Human toxicity - non-cancer effects (**)	[CTUh]	2.19E-06	1.87E-11	8.91E-10	3.81E-09	4.91E-09	2.23E-09	-3.93E-07
Land Use related impacts/ Soil quality (**)	dimensionless	1.56E+02	6.80E-03	5.32E-01	1.39E+00	3.50E+00	2.10E-01	-1.68E+01

(*) **Disclaimer:** This impact category deals mainly with the eventual impact of low dose ionizing radiation on human health of the nuclear fuel cycle. It does not consider effects due to possible nuclear accidents, occupational exposure nor due to radioactive waste disposal in underground facilities. Potential ionizing radiation from the soil, from radon and from some construction materials is also not measured by this indicator.

(**) **Disclaimer:** the results of this Environmental impacts indicator shall be used with care as the uncertainties on these results are high or as there is limited experience with the indicator.

Scenario 100% glass landfill

Table 69 Additional Environmental impacts indicators for 1 m² SlimLine 38 window – STN, scenario 100% glass landfill

Impact category	Unit	A1-A3	A4	C1	C2	C3	C4	D
Particular Matter emissions	Disease incidence	3.26E-06	3.14E-11	2.54E-09	2.53E-09	2.25E-09	4.67E-08	-7.90E-07
Ionising radiation - human health (*)	[kBq U235 eq.]	5.50E+00	1.98E-06	3.46E-02	1.60E-04	2.09E-02	1.11E-02	-1.57E+00
Eco-toxicity (freshwater) (**)	[CTUe]	2.42E+03	1.80E-02	8.21E-01	1.45E+00	8.99E-01	3.67E+00	-4.24E+01
Human toxicity - cancer effects (**)	[CTUh]	2.59E-08	3.57E-13	2.13E-11	2.88E-11	1.24E-10	4.97E-10	-2.59E-09
Human toxicity - non-cancer effects (**)	[CTUh]	2.19E-06	1.87E-11	8.91E-10	1.51E-09	1.02E-09	5.34E-08	-7.57E-08
Land Use related impacts/ Soil quality (**)	dimensionless	1.56E+02	6.80E-03	5.32E-01	5.49E-01	1.11E+00	1.32E+00	-5.76E+00

(*) **Disclaimer:** This impact category deals mainly with the eventual impact of low dose ionizing radiation on human health of the nuclear fuel cycle. It does not consider effects due to possible nuclear accidents, occupational exposure nor due to radioactive waste disposal in underground facilities. Potential ionizing radiation from the soil, from radon and from some construction materials is also not measured by this indicator.

(**) **Disclaimer:** the results of this Environmental impacts indicator shall be used with care as the uncertainties on these results are high or as there is limited experience with the indicator.

11.2 Result of the LCA – Resource use SlimLine 38 window – STN, 1 m²

The tables below report the results of the resource use for the two glass scenarios: 100% recycling and 100% landfill.

Scenario 100% glass recycling

Table 70 Resource use for 1 m² SlimLine 38 window – STN, scenario 100% glass recycling

Parameter	Unit	A1-A3	A4	C1	C2	C3	C4	D
PERE	MJ	2.22E+02	1.26E-03	6.68E-01	2.57E-01	-5.36E-01	1.66E-01	-6.86E+01
PERM	MJ	0.00E+00	0.00E+00	0.00E+00	0.00E+00	0.00E+00	0.00E+00	0.00E+00
PERT	MJ	2.22E+02	1.26E-03	6.68E-01	2.57E-01	-5.36E-01	1.66E-01	-6.86E+01
PENRE	MJ	1.06E+03	2.17E-02	1.69E+00	4.43E+00	-5.70E-02	1.29E+00	-3.21E+02
PENRM	MJ	4.31E+01	0.00E+00	0.00E+00	0.00E+00	0.00E+00	0.00E+00	0.00E+00
PENRT	MJ	1.10E+03	2.17E-02	1.69E+00	4.43E+00	-5.70E-02	1.29E+00	-3.21E+02
SM	kg	2.04E+00	0.00E+00	0.00E+00	0.00E+00	0.00E+00	0.00E+00	0.00E+00
RSF	MJ	0.00E+00	0.00E+00	0.00E+00	0.00E+00	0.00E+00	0.00E+00	0.00E+00
NRSF	MJ	0.00E+00	0.00E+00	0.00E+00	0.00E+00	0.00E+00	0.00E+00	0.00E+00
FW	m ³	3.86E-01	1.12E-06	6.49E-04	2.29E-04	8.72E-04	6.07E-03	-1.84E-01

Note: PERE – use of renewable primary energy excluding renewable primary energy resources used as raw materials; PERM – use of renewable primary energy resources used as raw materials; PERT – Total use of renewable primary energy resources; PENRE – use of non-renewable primary energy excluding non-renewable primary energy resources used as raw materials; PENRM – use of non-renewable primary energy resources used as raw materials; PENRT – Total use of non-renewable primary energy resources; SM – Use of secondary materials; RSF – Use of renewable secondary fuels; NRSF – use of non-renewable secondary fuels; FW – use of net fresh water.

Scenario 100% glass landfill

Table 71 Resource use for 1 m² SlimLine 38 window – STN, scenario 100% glass landfill

Parameter	Unit	A1-A3	A4	C1	C2	C3	C4	D
PERE	MJ	2.22E+02	1.26E-03	6.68E-01	1.02E-01	1.22E+00	9.10E-01	-5.78E+01
PERM	MJ	0.00E+00	0.00E+00	0.00E+00	0.00E+00	0.00E+00	0.00E+00	0.00E+00
PERT	MJ	2.22E+02	1.26E-03	6.68E-01	1.02E-01	1.22E+00	9.10E-01	-5.78E+01
PENRE	MJ	1.06E+03	2.17E-02	1.69E+00	1.75E+00	2.25E+00	6.81E+00	-1.34E+02
PENRM	MJ	4.31E+01	0.00E+00	0.00E+00	0.00E+00	0.00E+00	0.00E+00	0.00E+00
PENRT	MJ	1.10E+03	2.17E-02	1.69E+00	1.75E+00	2.25E+00	6.81E+00	-1.34E+02
SM	kg	2.04E+00	0.00E+00	0.00E+00	0.00E+00	0.00E+00	0.00E+00	0.00E+00
RSF	MJ	0.00E+00	0.00E+00	0.00E+00	0.00E+00	0.00E+00	0.00E+00	0.00E+00
NRSF	MJ	0.00E+00	0.00E+00	0.00E+00	0.00E+00	0.00E+00	0.00E+00	0.00E+00
FW	m ³	3.86E-01	1.12E-06	6.49E-04	9.03E-05	6.55E-04	7.43E-03	-1.40E-01

Note: PERE – use of renewable primary energy excluding renewable primary energy resources used as raw materials; PERM – use of renewable primary energy resources used as raw materials; PERT – Total use of renewable primary energy resources; PENRE – use of non-renewable primary energy excluding non-renewable primary energy resources used as raw materials; PENRM – use of non-renewable primary energy resources used as raw materials; PENRT – Total use of non-renewable primary energy resources; SM – Use of secondary materials; RSF – Use of renewable secondary fuels; NRSF – use of non-renewable secondary fuels; FW – use of net fresh water.

11.3 Result of the LCA – Output flows, waste categories

Scenario 100% glass recycling

Table 72 Output flows, waste categories for 1 m² SlimLine 38 window – STN, scenario 100% glass recycling

Parameter	Unit	A1-A3	A4	C1	C2	C3	C4	D
HWD	kg	5.17E-07	9.07E-13	3.85E-10	1.85E-10	4.15E-10	2.85E-10	-7.05E-08
NHWD	kg	7.53E+00	3.50E-06	1.05E-03	7.15E-04	2.08E-02	5.13E-01	-3.39E+00
RWD	kg	2.26E-02	2.08E-08	2.11E-04	4.25E-06	-4.56E-04	3.47E-05	-1.13E-02
CRU	kg	0.00E+00	0.00E+00	0.00E+00	0.00E+00	0.00E+00	0.00E+00	0.00E+00
MFR	kg	0.00E+00	0.00E+00	0.00E+00	0.00E+00	3.07E+01	0.00E+00	0.00E+00
MER	kg	0.00E+00	0.00E+00	0.00E+00	0.00E+00	0.00E+00	0.00E+00	0.00E+00
EEE	MJ	0.00E+00	0.00E+00	0.00E+00	0.00E+00	0.00E+00	4.17E+00	0.00E+00
EET	MJ	0.00E+00	0.00E+00	0.00E+00	0.00E+00	0.00E+00	7.62E+00	0.00E+00

Note: HWD – hazardous waste disposed; NHWD – Non-hazardous waste disposed; RWD – Radioactive waste disposed; CRU – Components for re-use; MFR – Materials for recycling; MER – Materials for energy recovery; EEE – Exported electrical energy; EET – Exported thermal energy.

Scenario 100% glass landfill

Table 73 Output flows, waste categories for 1 m² SlimLine 38 window – STN, scenario 100% glass landfill

Parameter	Unit	A1-A3	A4	C1	C2	C3	C4	D
HWD	kg	5.17E-07	9.07E-13	3.85E-10	7.32E-11	1.75E-09	8.71E-10	-6.83E-08
NHWD	kg	7.53E+00	3.50E-06	1.05E-03	2.83E-04	2.33E-03	2.81E+01	-2.73E+00
RWD	kg	2.26E-02	2.08E-08	2.11E-04	1.68E-06	2.12E-04	9.26E-05	-8.36E-03
CRU	kg	0.00E+00	0.00E+00	0.00E+00	0.00E+00	0.00E+00	0.00E+00	0.00E+00
MFR	kg	0.00E+00	0.00E+00	0.00E+00	0.00E+00	4.08E+00	0.00E+00	0.00E+00
MER	kg	0.00E+00	0.00E+00	0.00E+00	0.00E+00	0.00E+00	0.00E+00	0.00E+00
EEE	MJ	0.00E+00	0.00E+00	0.00E+00	0.00E+00	0.00E+00	4.17E+00	0.00E+00
EET	MJ	0.00E+00	0.00E+00	0.00E+00	0.00E+00	0.00E+00	7.62E+00	0.00E+00

Note: HWD – hazardous waste disposed; NHWD – Non-hazardous waste disposed; RWD – Radioactive waste disposed; CRU – Components for re-use; MFR – Materials for recycling; MER – Materials for energy recovery; EEE – Exported electrical energy; EET – Exported thermal energy.

12 LCA – INTERPRETATION

The results are analyzed and interpreted for modules A1-A3 and modules C1-D for the product with the highest LCIA results within this EPD. In case the selected product has double and triple glazing variants, a comparison between these two options is provided. Results for module A4 are not further interpreted, as calculated only for 1 km. Finally, the end-of-life modules are compared to the most impactful modules (A1-A3) for the product with the highest LCIA results. This allows a comparison of the impacts of the two extreme end-of-life scenarios for glass: 100% glass recycling and 100% glass to landfill.

Production stages: modules A1 to A3.

The biggest contributor to the Environmental impacts is aluminium production which is influenced by the mass of aluminium in the declared unit: the higher the aluminium mass, the higher the indicator. Hence, the GWP indicator evolves from 1.00E+01 [kg CO₂-eq] for the SDO window to 1.20E+02 [kg CO₂-eq] for the STO window.

Within the aluminium production processes, the primary aluminium production is dominant, especially the alumina production and the electrolysis. The recycled ingot production, which presents a much lower impact than the primary ingot production, is used in Module A1-A3 for the fraction of aluminium coming from recycling. The extrusion process which converts ingot, i.e. billets, into profile is much less significant. The LCA modelling and the impact of the primary aluminium production are detailed in the Environmental Profile Report 2018.

End-of-life stage: modules C1-C4 and module D

Modules C1-C3: they are negligible for all products compared to modules A1-A3 (<1.5% for scenario 100% glass recycling and <0.6% for scenario 100% glass landfill).

Module C4: the contribution of module C4 (disposal) is very limited (<5%) compared to modules A1-A3 and module D.

Module D: environmental benefits come from the recycling of aluminium. About 32.8% of GWP savings, for scenario 100% glass recycling, are obtained in Module D compared to the value calculated for module A1-A3 and 20.8% for scenario 100% glass landfill. These calculations show the relevance to consider Module D in the full assessment of window systems in the building context.

13 OTHER INFORMATION

Reynaers Aluminium is founded on the concept of corporate responsibility and includes recognition of the need for positive actions and continuous support and development of the local communities that neighbour our facilities.

Through its Management Systems, certified according to ISO 9001:2015 and ISO 14001:2015, Reynaers Aluminium actively implements best practices regarding environmental protection through significant investments and measures, by optimizing the production cycle, implementing new procedures that reduce the energy footprint of our plants, and the vigilant prevention of any possibility of environmental pollution.

Additional information about Reynaers Aluminium's corporate responsibility and sustainability policy (Reynaers Act) and the products can be found on the Reynaers Aluminium website www.reynaers.com.

These EPD results have been calculated from an LCA tool for EPD, based on the GaBi database, initially realised by thinkstep GmbH in 2013 and updated by Ecoinnovazione in 2019 (Ecoinnovazione S.r.l. – spin-off ENEA Via della Liberazione, 6/c, 40128 Bologna BO www.ecoinnovazione.it).

14 REFERENCES

European Aluminium General Programme Instructions version 3, 23rd of September 2020

European Aluminium (2018) ENVIRONMENTAL PROFILE REPORT Life-Cycle inventory data for aluminium production and transformation processes in Europe February 2018

EN 15804:2012+A2:2019, Sustainability of construction works - Environmental Product Declarations – Core rules for the product category of construction products.

International Organisation for Standardization (ISO), 2006 Environmental labels and declarations -- Type III environmental declarations -- Principles and procedures. ISO 14025:2006, Geneva.

METALFORM

MASTERS OF METAL

UNITED KINGDOM

METALFORM

NORWAYMETAL LTD

53 Chelsea Manor Street

London, SW3 5RZ

SALES@METALFORM.UK

+44 20 81298814

GERMANY

METALFORM GMBH

Carl-Zeiss-Ring 15A

85737 Ismaning

SALES@METALFORMGROUP.DE

+49 17663630406

NORWAY

METALFORM AS

Brochmannsveien 2

1950 Rømskog

SALG@METALFORM.NO

+47 401 62 446

METALFORMGROUP

SALES@METALFORMGROUP.COM